

# INTERIOR

Click on the applicable bookmark to selected the required model year.

# INTERIOR

## CONTENTS

SERVICE SPECIFICATIONS .....	3	FRONT SEAT .....	18
SPECIAL TOOL .....	3	REAR/SECOND SEAT .....	25
INSTRUMENT PANEL <L.H. DRIVE VEHICLES>* .....	4	THIRD SEAT .....	35
INSTRUMENT PANEL <R.H. DRIVE VEHICLES>* .....	8	FRONT SEAT BELT .....	38
FLOOR CONSOLE .....	12	REAR SEAT BELT<SHORT WHEELBASE> .	40
TRIMS .....	13	SECOND/THIRD SEAT BELT <LONG WHEELBASE> .....	41
SUNVISOR HOLDER .....	17		

### WARNINGS REGARDING SERVICING OF SUPPLEMENTAL RESTRAINT SYSTEM (SRS) EQUIPPED VEHICLES

#### WARNING!

- (1) Improper service or maintenance of any component of the SRS, or any SRS-related component, can lead to personal injury or death to service personnel (from inadvertent firing of the air bag) or to the driver (from rendering the SRS inoperative).
- (2) Service or maintenance of any SRS component or SRS-related component must be performed only at an authorized MITSUBISHI dealer.
- (3) MITSUBISHI dealer personnel must thoroughly review this manual, and especially its GROUP 52B - Supplemental Restraint System (SRS) before beginning any service or maintenance of any component of the SRS or any SRS-related component.

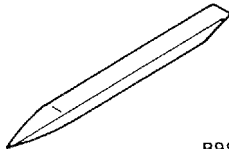
#### NOTE

The SRS includes the following components: front impact sensors, SRS-ECU, SRS warning lamp, air bag module, clock spring and interconnecting wiring. Other SRS-related components (that may have to be removed/installed in connection with SRS service or maintenance) are indicated in the table of contents by an asterisk (\*).

## SERVICE SPECIFICATIONS

Items		Standard value	
		Sport seat	Except sport seat
Seat cushion heater resistance $\Omega$ (at cabin temperature of 20°C)	Between terminals 1 and 3	6.4±10%	5.0 ± 10%
	Between terminals 2 and 3	6.0±10%	5.4 ± 10%
Seatback heater resistance $\Omega$ (at cabin temperature of 20°C)	Between terminals 1 and 2	6.0±10%	6.0 ± 10%

## SPECIAL TOOL

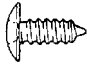
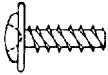

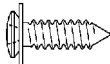


Tool	Number	Name	Use
 B990784	MB990784	Ornament remover	Removal of switch, trim, etc.

**INSTRUMENT PANEL <L.H. DRIVE VEHICLES>****Caution**

For removal of instrument panel and the passenger's side air bag module, always observe the service procedures described in GROUP 52B - Air Bag Module and Clock Spring.

**REMOVAL AND INSTALLATION**

For installation of the instrument panel, the bolts and screws described below are used. They are indicated by symbols in the illustration.

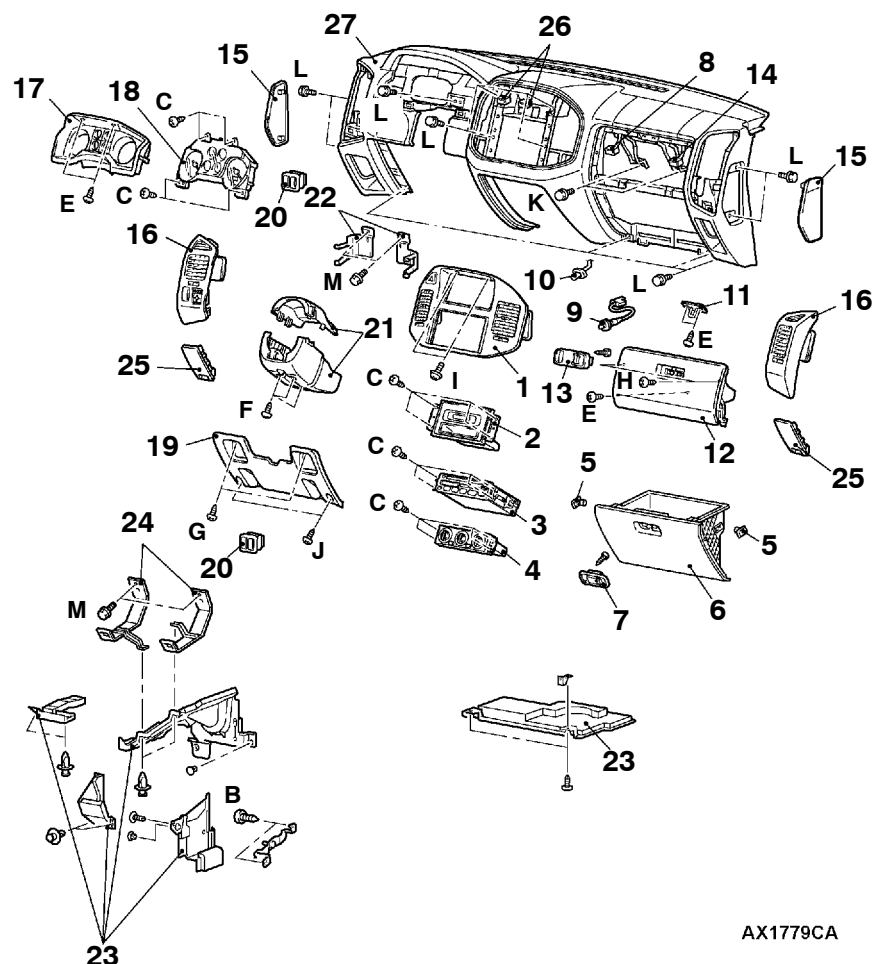
Name	Symbol	Size mm (D x L)	Colour	Shape
Tapping screw	A	5 x 10	-	 19Z0004
	B	5 x 12	-	
	C	5 x 16	-	 19Z0022
	D	5 x 16	-	
	E	5 x 16	Black	
	F	5 x 20	-	
	G	5 x 20	Black	
	H	5 x 16	-	 19Z0003
Washer assembled screw	I	5 x 16	-	 X0010BY
Washer assembled bolt	J	5 x 20	Black	 19Z0005
	K	6 x 16	-	
	L	6 x 16	Black	
	M	6 x 20	-	 19Z0010

D = Thread diameter

L = Effective thread length

**CAUTION: SRS**

When removing and installing the instrument panel (vehicles equipped with SRS), do not let it bump against the SRS-ECU.

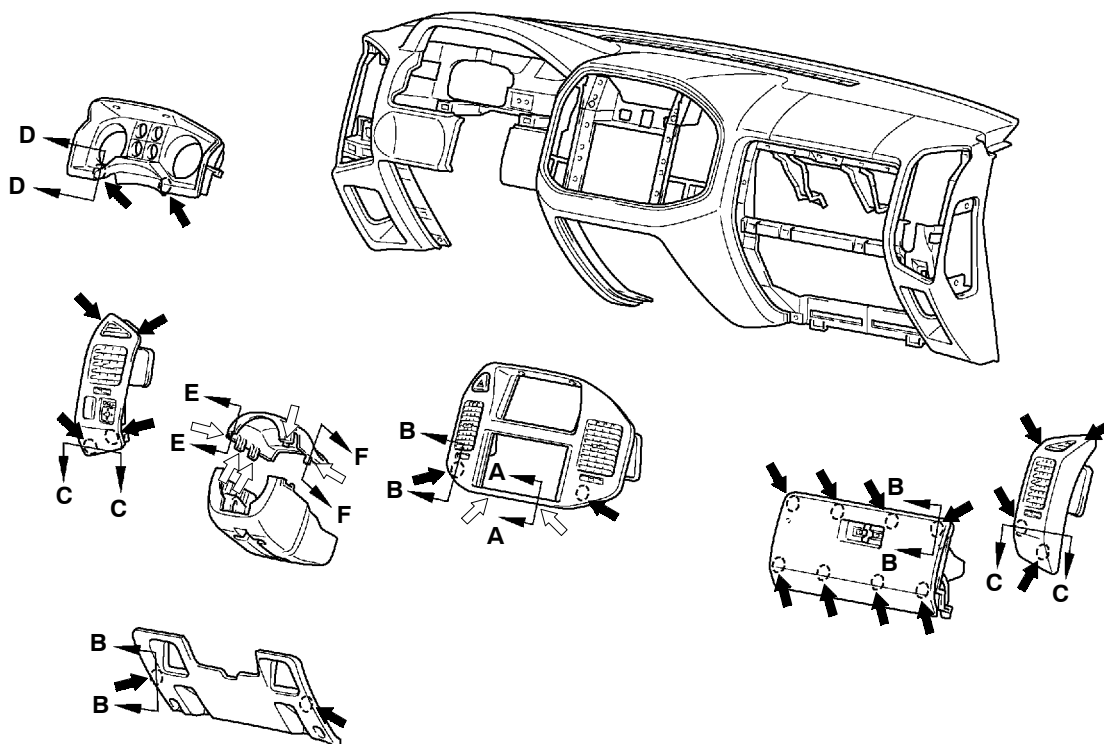


AX1779CA

**Removal steps**

- Rear floor console assembly (Refer to P.52A-12.)
- CD player unit (Refer to GROUP 54A.)
- Front floor console (Refer to P.52A-12.)
- 1. Center panel assembly
- 2. Center display
- 3. Radio and tape player
- 4. Manual air conditioner assembly
- 5. Glove box stopper
- 6. Glove box assembly
- 7. Glove box lock
- 8. Glove box lamp switch harness connector
- 9. Glove box lamp switch
- 10. Glove box lamp
- 11. Upper glove box striker
- 12. Upper glove box assembly
- 13. Upper glove box lid lock
- 14. Front passenger's side air bag module harness connector
- 15. Instrument panel side cover
- 16. Air outlet assembly
- 17. Meter bezel
- 18. Combination meter assembly
  - Hood opener lever (Refer to GROUP 42.)
  - Fuel lid opener lever (Refer to GROUP 42.)
- 19. Lower panel
- 20. Switch panel
- 21. Column cover
- 22. Stay A
  - Assist grip (Refer to P.52A-13,15.)
  - Front pillar trim (Refer to P.52A-13,15.)
- 23. Under cover assembly
- 24. Stay B
- 25. Corner lower panel
- 26. Photo sensor harness connector
  - Steering shaft assembly bolt (Refer to GROUP 37A.)
- 27. Instrument panel assembly

## CLIP AND CLAW POSITION

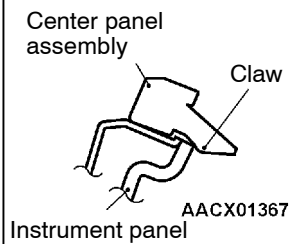


## NOTE

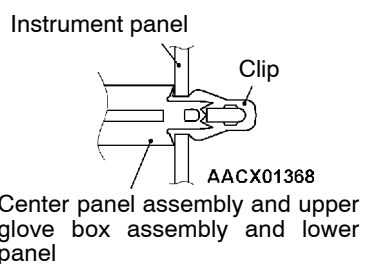
➔ : Clip position  
 ⇐ : Claw position

ACX01533

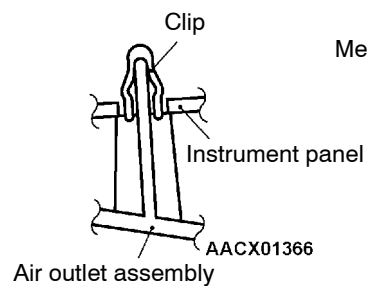
## Section A - A



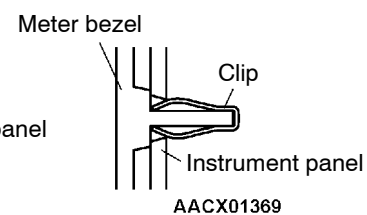
## Section B - B



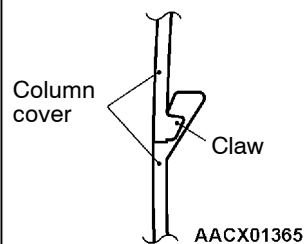
## Section C - C



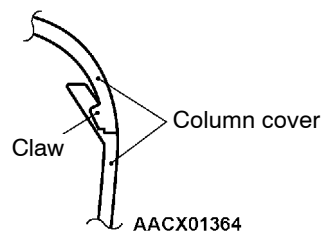
## Section D - D



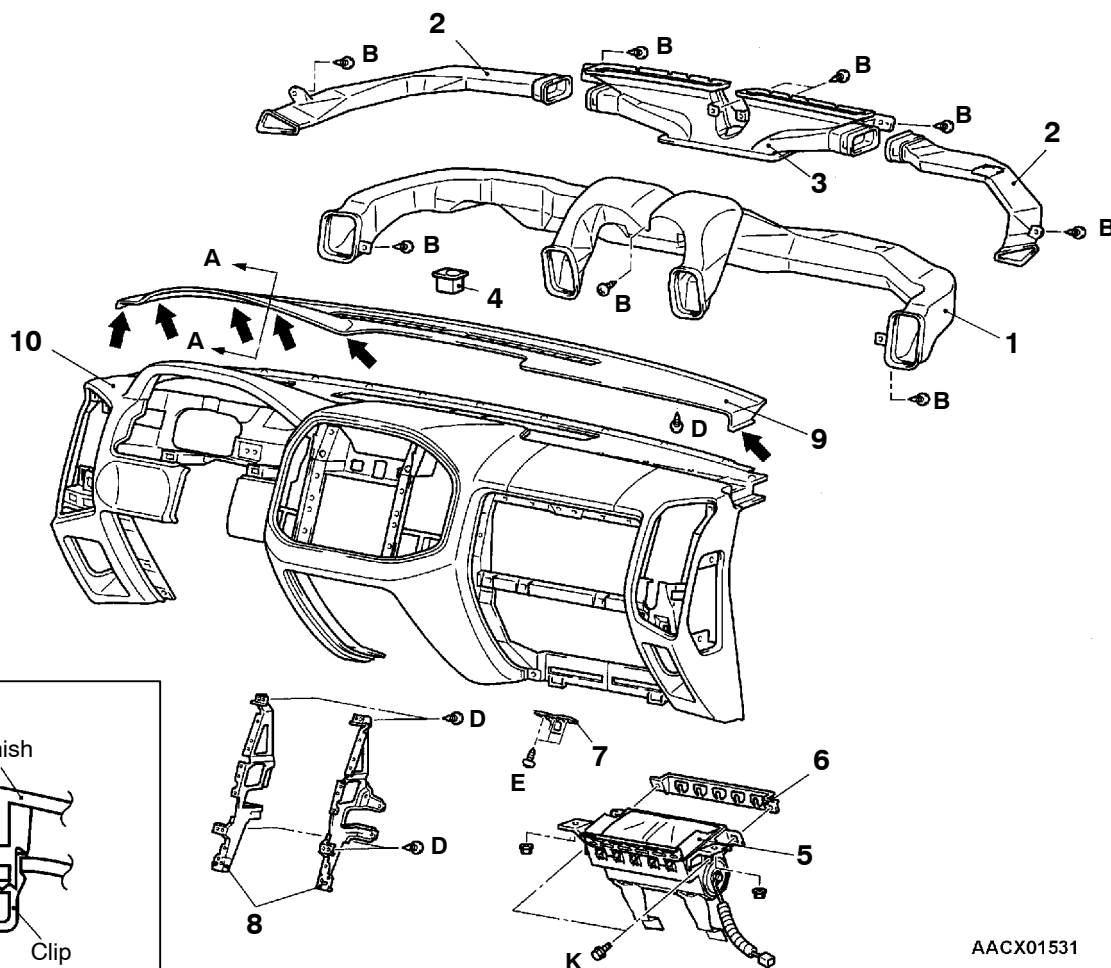
## Section E - E



## Section F - F



## DISASSEMBLY AND REASSEMBLY



### Disassembly steps

1. Distribution duct
2. Side defroster duct
3. Center defroster duct
4. Photo sensor
5. Front passenger's side air bag module

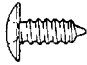
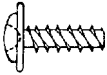

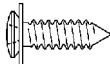
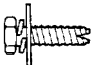

6. Air bag side plate
7. Glove box striker
8. Instrument panel center reinforcement
9. Defroster garnish
10. Instrument panel

**INSTRUMENT PANEL <R.H. DRIVE VEHICLES>****Caution**

For removal of instrument panel and the passenger's side air bag module, always observe the service procedures described in GROUP 52B - Air Bag Module and Clock Spring.

**REMOVAL AND INSTALLATION**

For installation of the instrument panel, the bolts and screws described below are used. They are indicated by symbols in the illustration.

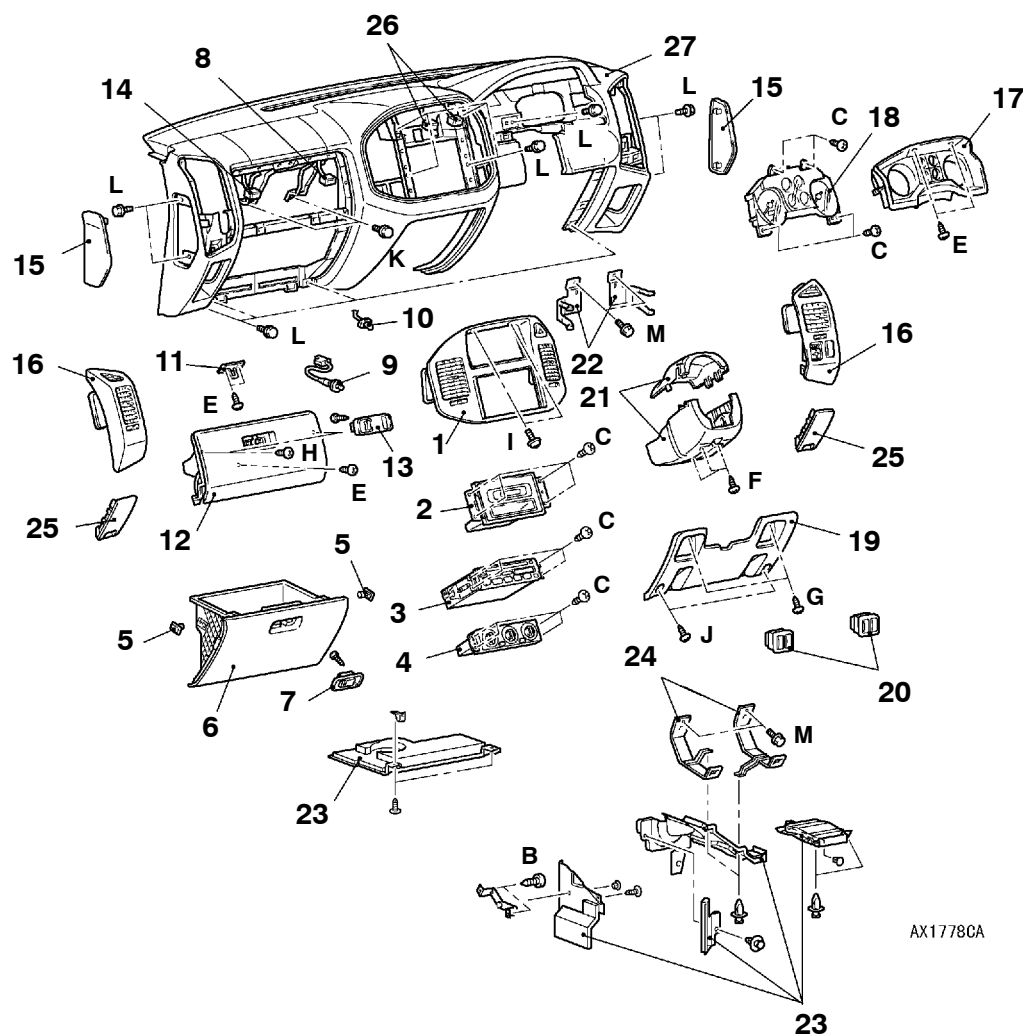
Name	Symbol	Size mm (D x L)	Colour	Shape
Tapping screw	a	5 x 10	-	 19Z0004
	b	5 x 12	-	
	c	5 x 16	-	 19Z0022
	d	5 x 16	-	
	e	5 x 16	Black	
	f	5 x 20	-	
	g	5 x 20	Black	
	h	5 x 16	-	 19Z0003
Washer assembled screw	i	5 x 16	-	 X0010BY
Washer assembled bolt	j	5 x 20	Black	 19Z0005
	k	6 x 16	-	
	l	6 x 16	Black	
	m	6 x 20	-	 19Z0010

D = Thread diameter

L = Effective thread length



**CAUTION: SRS**  
When removing and installing the instrument panel (vehicles equipped with SRS), do not let it bump against the SRS-ECU.

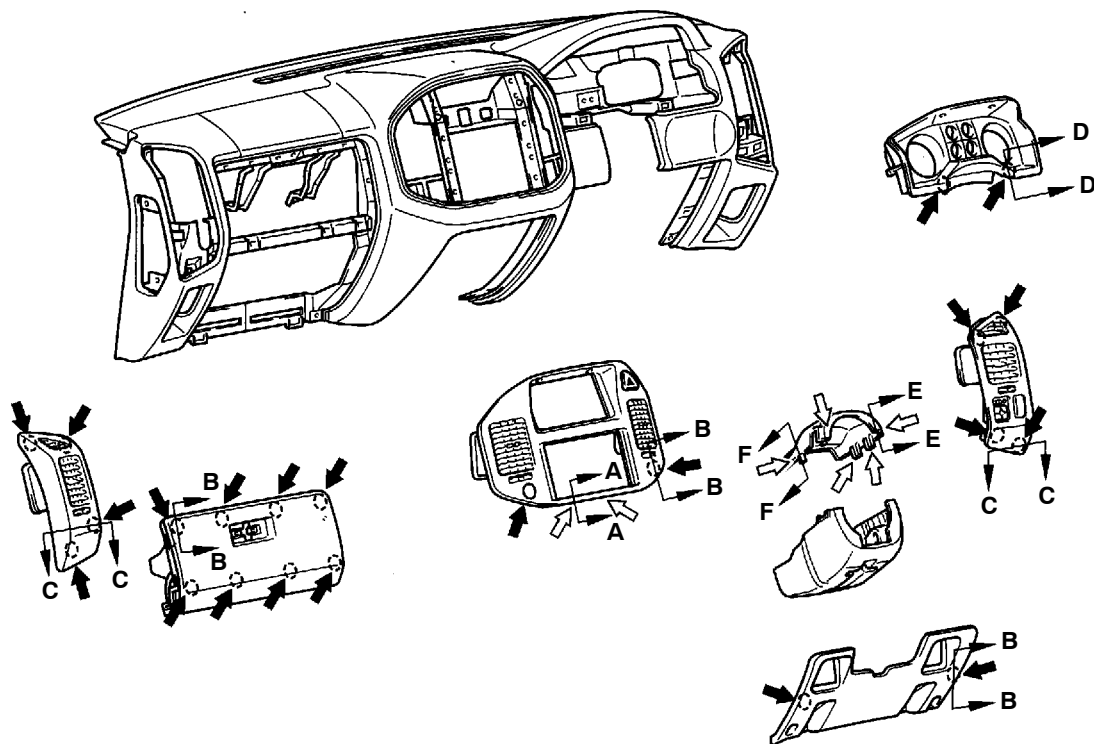


AX1778CA

### Removal steps

- Rear floor console assembly (Refer to P.52A-12.)
- CD player unit (Refer to GROUP 54A.)
- Front floor console (Refer to P.52A-12.)
- 1. Center panel assembly
- 2. Center display
- 3. Radio and tape player
- 4. Manual air conditioner assembly
- 5. Glove box stopper
- 6. Glove box assembly
- 7. Glove box lock
- 8. Glove box lamp switch harness connector
- 9. Glove box lamp switch
- 10. Glove box lamp
- 11. Upper glove box striker
- 12. Upper glove box assembly
- 13. Upper glove box lid lock
- 14. Front passenger's side air bag module harness connector
- 15. Instrument panel side cover
- 16. Air outlet assembly
- 17. Meter bezel
- 18. Combination meter assembly
  - Hood opener lever (Refer to GROUP 42.)
  - Fuel lid opener lever (Refer to GROUP 42.)
- 19. Lower panel
- 20. Switch panel
- 21. Column cover
- 22. Stay A
  - Assist grip (Refer to P.52A-13,15.)
  - Front pillar trim (Refer to P.52A-13,15.)
- 23. Under cover assembly
- 24. Stay B
- 25. Corner lower panel
- 26. Photo sensor harness connector
  - Steering shaft assembly bolt (Refer to GROUP 37A.)
- 27. Instrument panel assembly

## CLIP AND CLAW POSITION

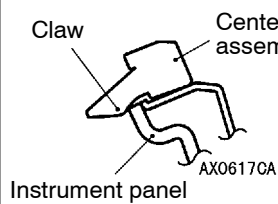


## NOTE

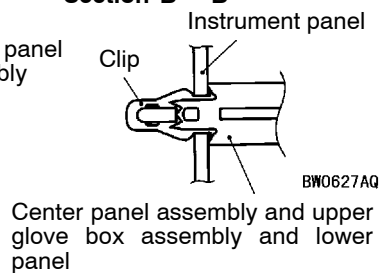
: Clip position  
 : Claw position

AX0873CA

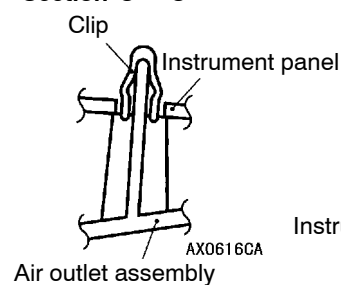
## Section A - A



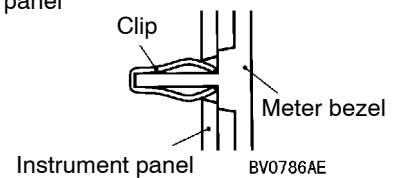
## Section B - B



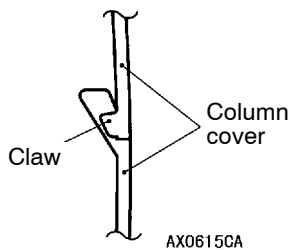
## Section C - C



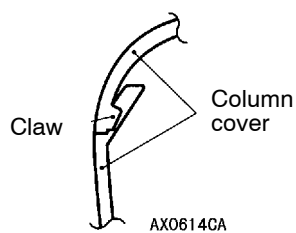
## Section D - D



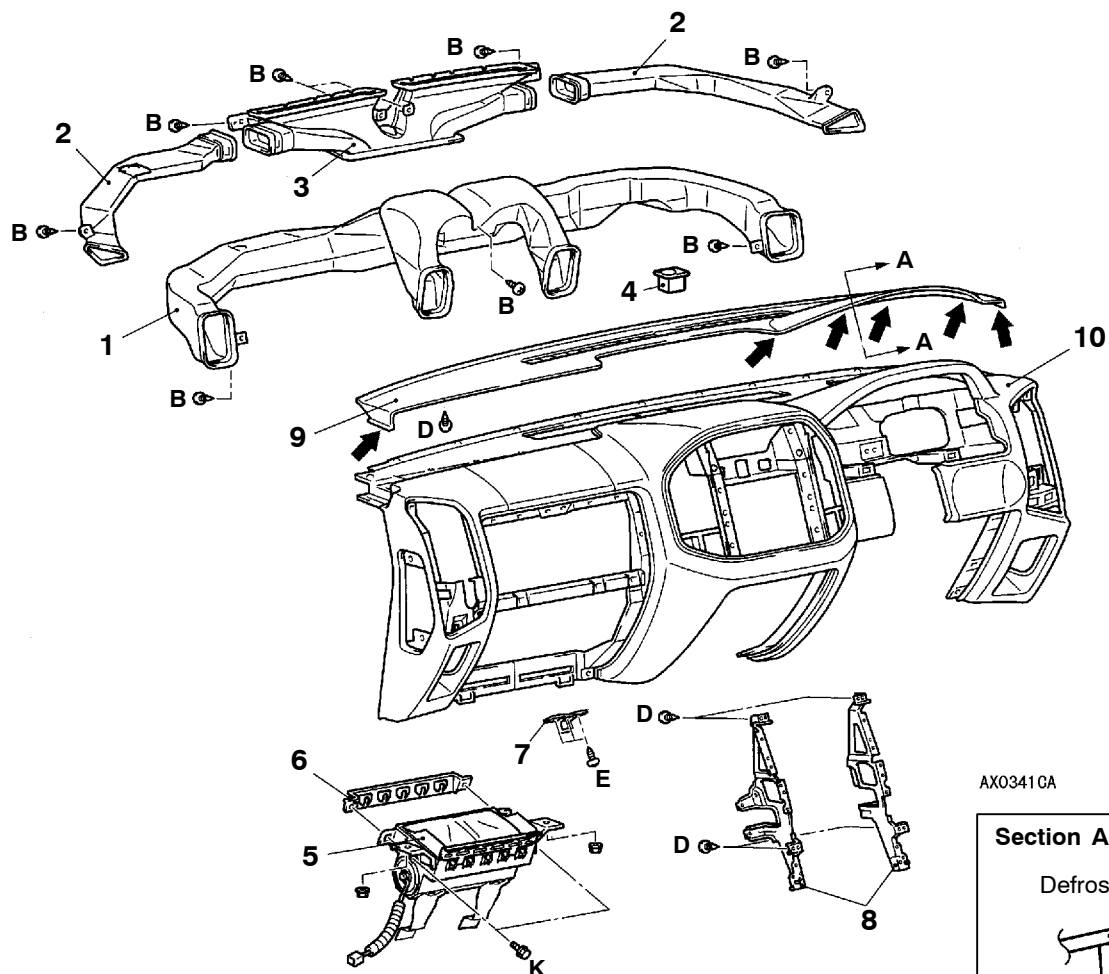
## Section E - E



## Section F - F



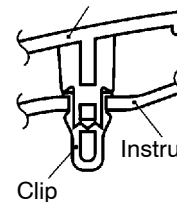
## DISASSEMBLY AND REASSEMBLY



AX03410A

### Section A - A

Defroster garnish



Instrument panel

Clip

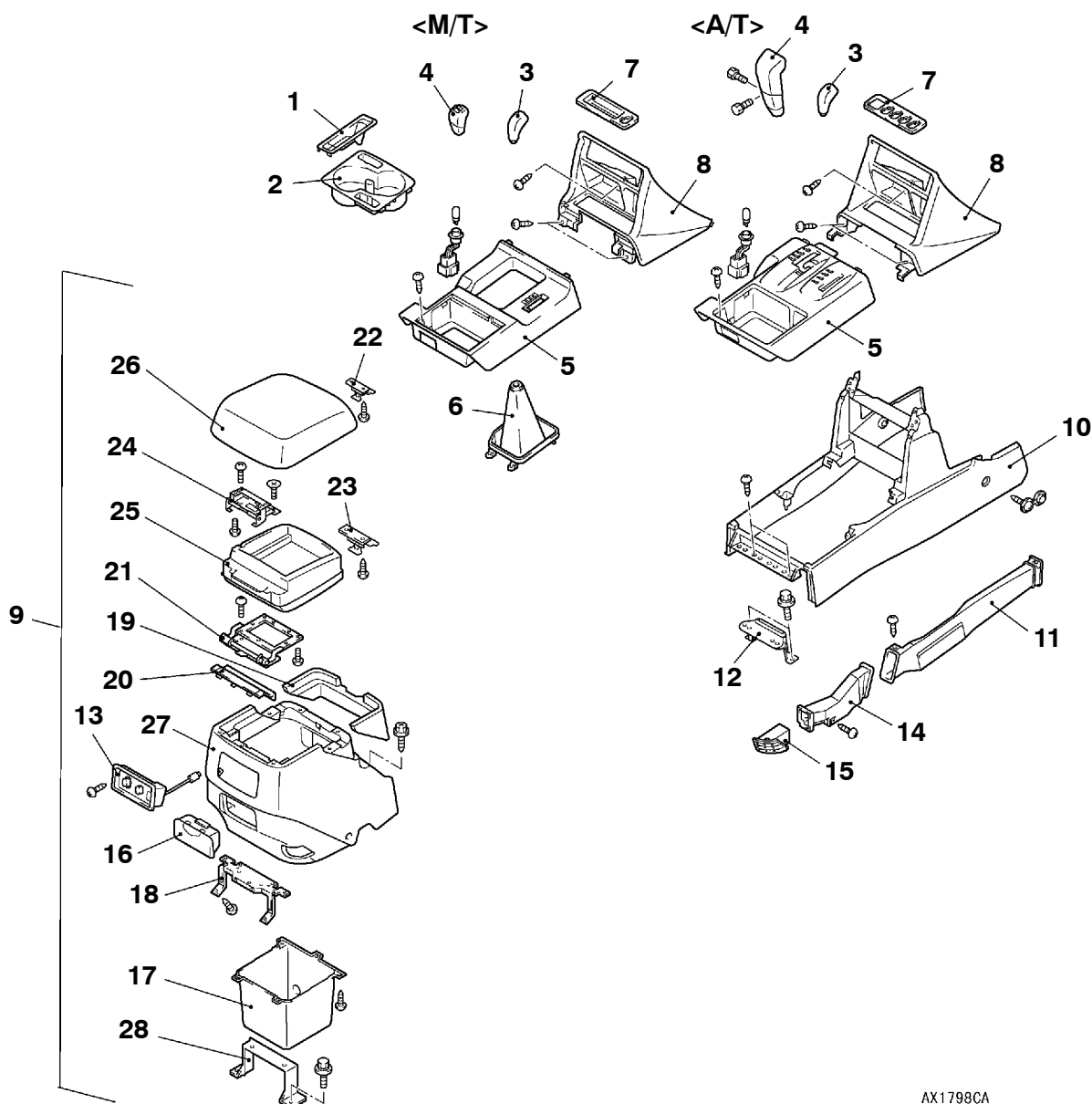
AX06130A

### Disassembly steps

1. Distribution duct
2. Side defroster duct
3. Center defroster duct
4. Photo sensor
5. Front passenger's side air bag module
6. Air bag side plate
7. Glove box striker
8. Instrument panel center reinforcement
9. Defroster garnish
10. Instrument panel

## FLOOR CONSOLE

## REMOVAL AND INSTALLATION



AX1798CA

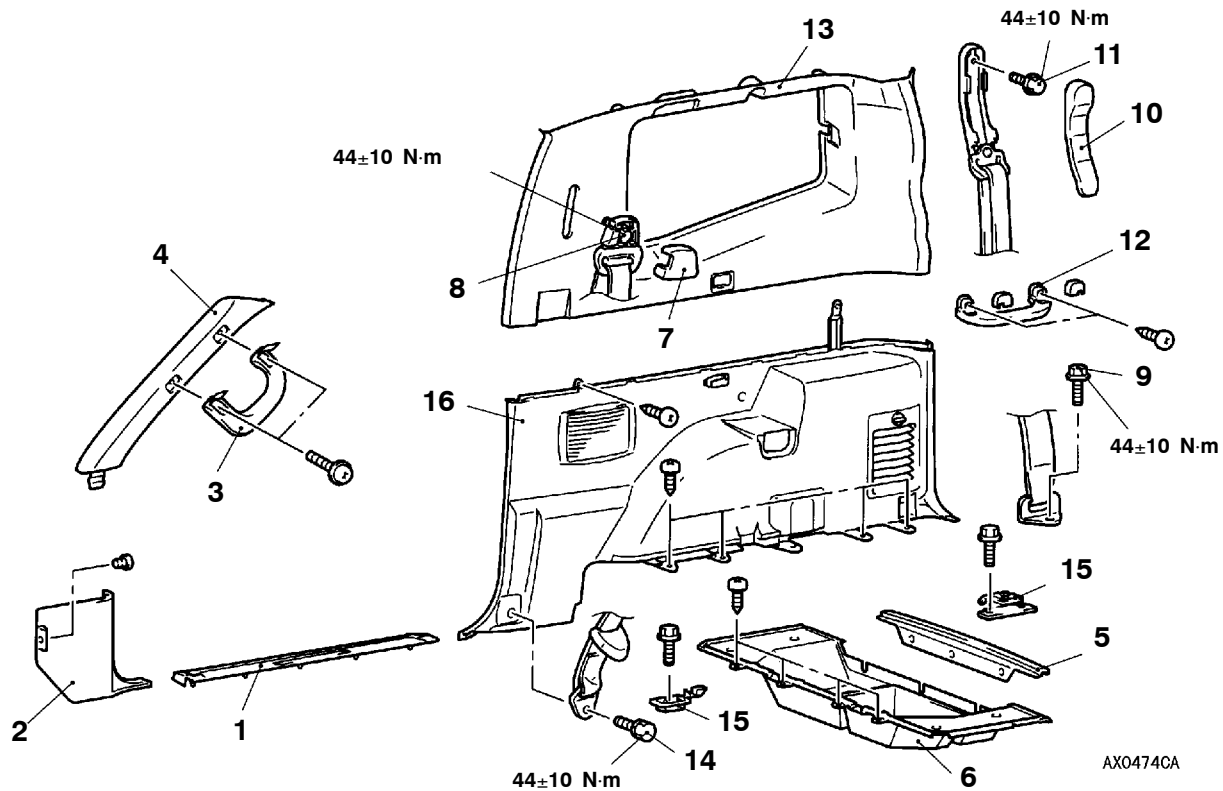
## Removal steps

1. Parking brake lever cover
2. Cup holder
3. Transfer shift knob
4. Selector lever knob
5. Indicator panel
6. Shift lever cover
7. Switch panel
8. Lower center panel
- Parking brake lever mounting bolt
9. Rear floor console assembly
10. Front floor console
11. Rear heater duct A
12. Console bracket A
13. Rear control assembly
14. Rear heater duct B
15. Rear heater duct nozzle
16. Rear floor console ashtray
17. Rear floor console box
18. Rear floor console bracket
19. Rear floor console upper cover
20. Rear floor console hinge cover
21. Hinge bracket
22. Lock A
23. Lock B
24. Lid bracket
25. Lid box
26. Lid assembly
27. Rear floor console
28. Console bracket B

## TRIMS

### REMOVAL AND INSTALLATION

<Short Wheelbase>



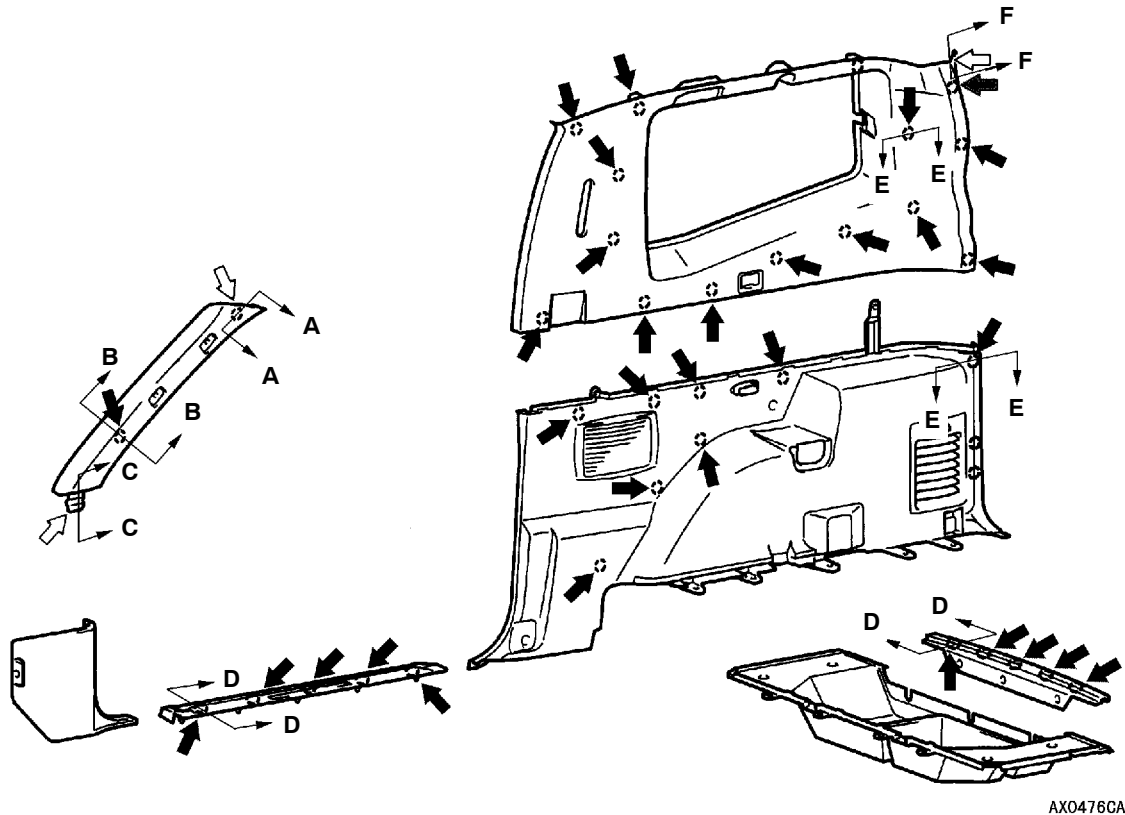
#### NOTE

For door trims, refer to GROUP 42.

1. Front scuff plate
2. Cowl side trim
3. Assist grip
4. Front pillar trim
5. Back door scuff plate
6. Luggage floor box
7. Sash guide cover
8. Front seat belt connection

9. Rear seat belt connection
10. Sash guide cover
11. Rear seat belt connection
12. Assist grip
13. Quarter trim, upper
14. Front seat belt connection
15. Luggage hook
16. Quarter trim, lower

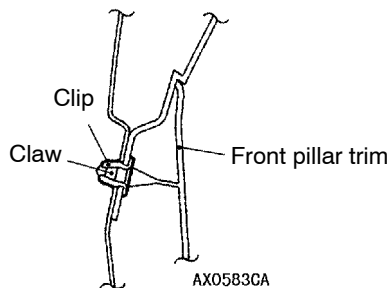
## CLIP AND CLAW POSITION



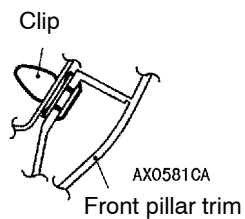
## NOTE

- ◀ : Clip position  
 ◁ : Claw position

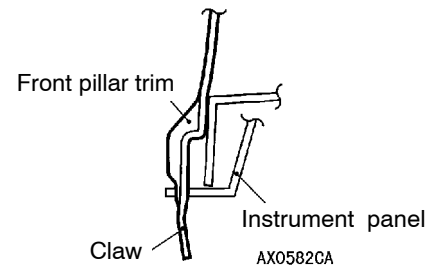
## Section A - A



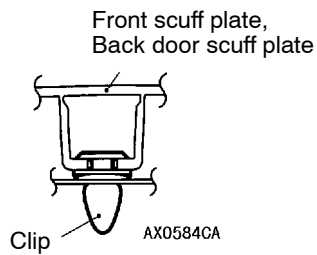
## Section B - B



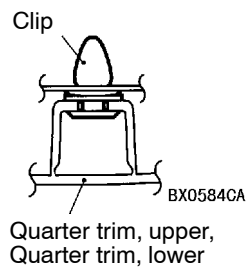
## Section C - C



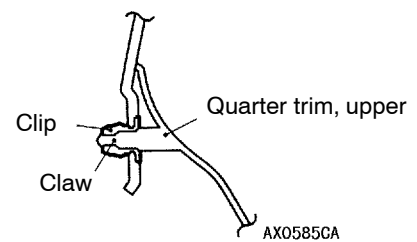
## Section D - D



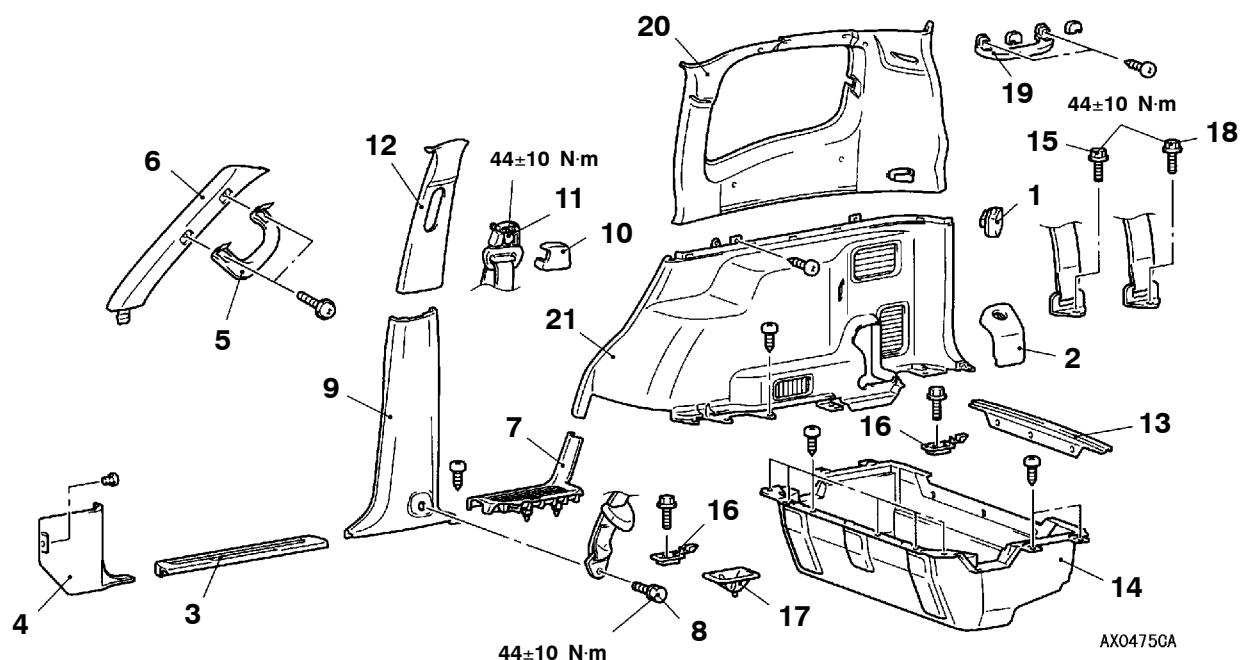
## Section E - E



## Section F - F



<Long Wheelbase>

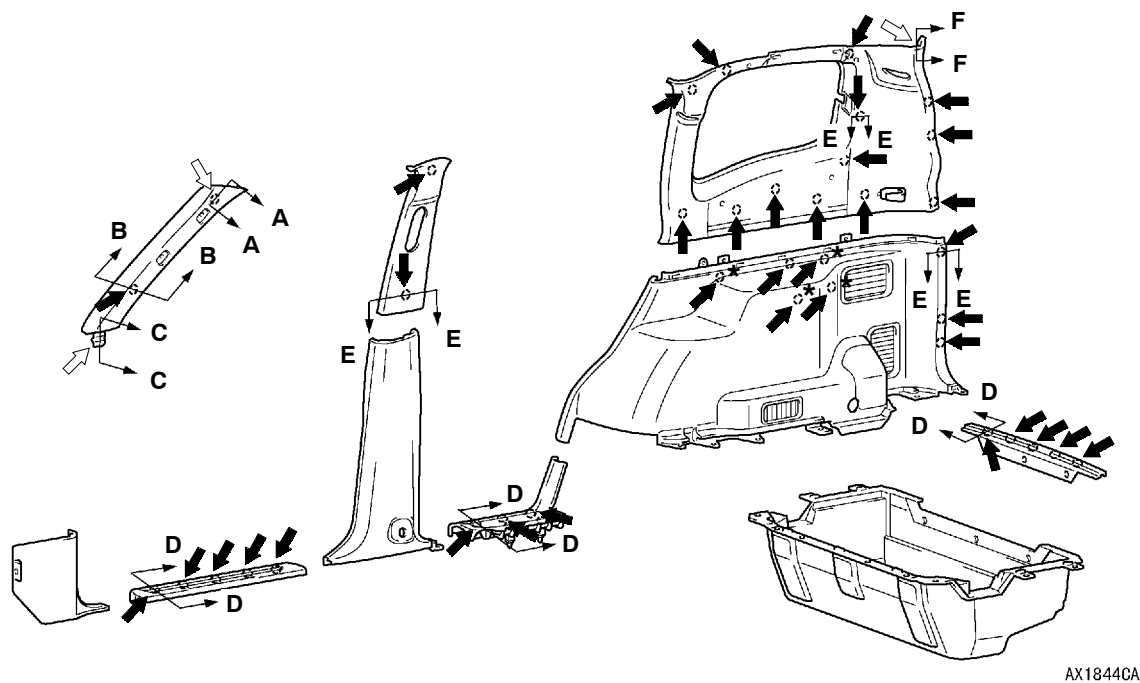


NOTE

For door trims, refer to GROUP 42.

- |                               |                                 |
|-------------------------------|---------------------------------|
| 1. AC socket                  | 11. Front seat belt connection  |
| 2. Quarter trim cover         | 12. Center pillar trim, upper   |
| ● Third seat assembly         | 13. Back door scuff plate       |
| 3. Front scuff plate          | 14. Luggage floor box           |
| 4. Cowl side trim             | 15. Second seat belt connection |
| 5. Assist grip                | 16. Luggage hook                |
| 6. Front pillar trim          | 17. Striker cover               |
| 7. Rear scuff plate           | 18. Third seat belt connection  |
| 8. Front seat belt connection | 19. Assist grip                 |
| 9. Center pillar trim, lower  | 20. Quarter trim, upper         |
| 10. Sash guide cover          | 21. Quarter trim, lower         |

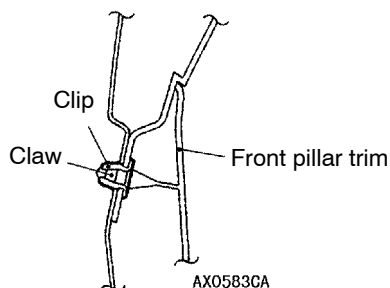
## CLIP AND CLAW POSITION



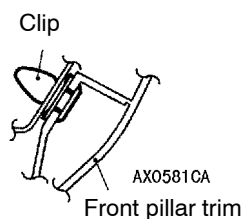
## NOTE

◀ : Clip position (\* mark shows L.H. side only)  
 ◀ : Claw position

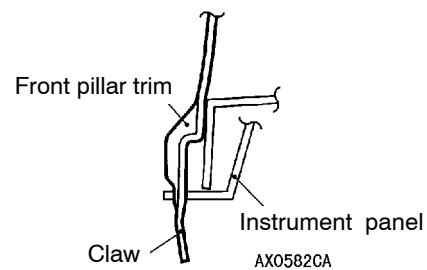
## Section A - A



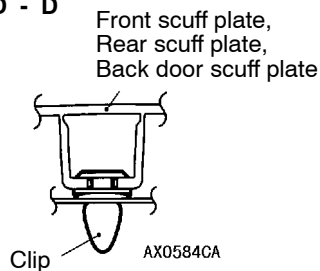
## Section B - B



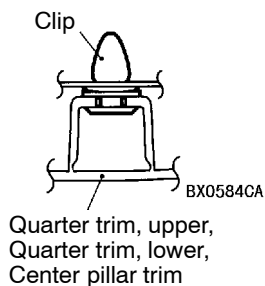
## Section C - C



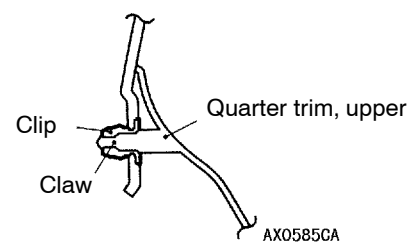
## Section D - D



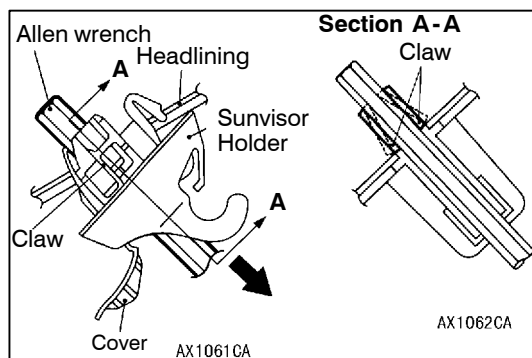
## Section E - E



## Section F - F







## SUNVISOR HOLDER

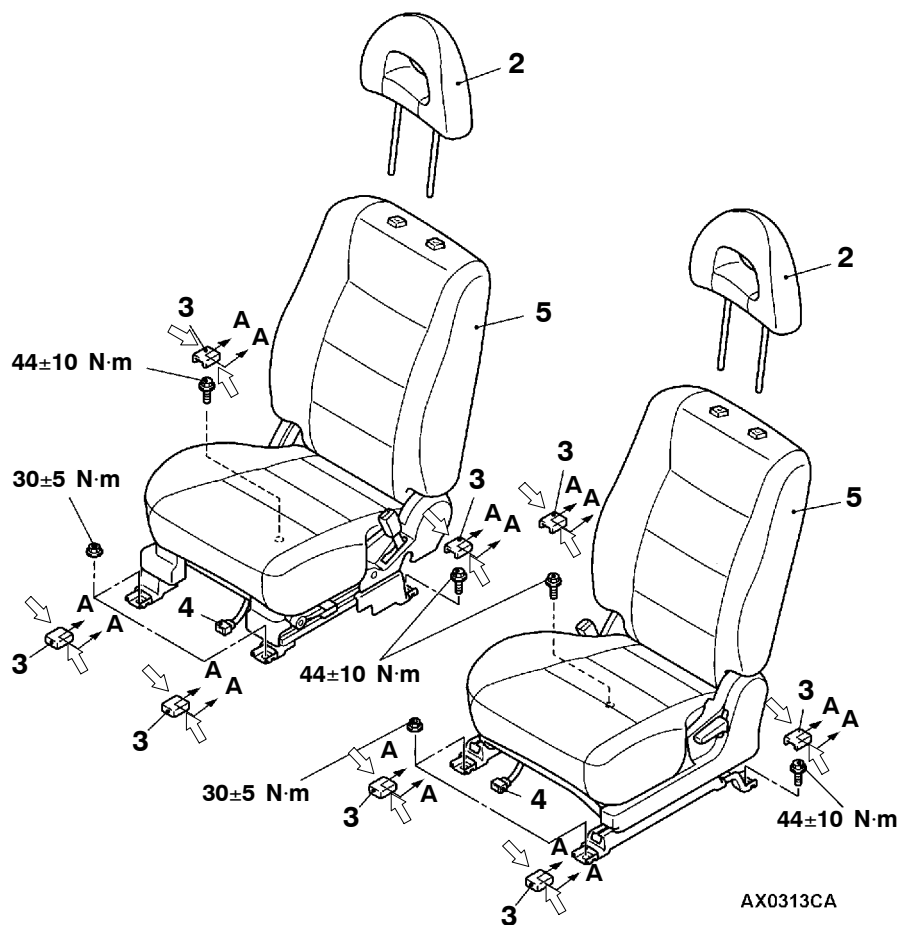
### REMOVAL SERVICE POINT

#### SUNVISOR HOLDER REMOVAL

1. Remove the sunvisor holder cover, insert a 6 mm-Allen wrench to disengage the sunvisor holder side claws.
2. Pull out the sunvisor into the shown direction to remove the sunvisor holder.

## FRONT SEAT

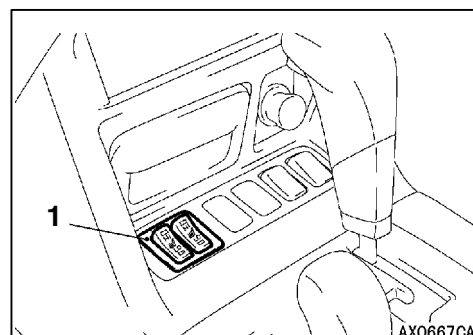
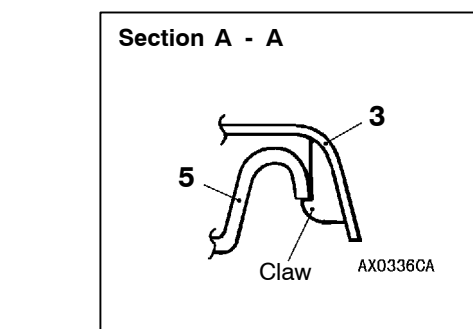
## REMOVAL AND INSTALLATION



## NOTE:

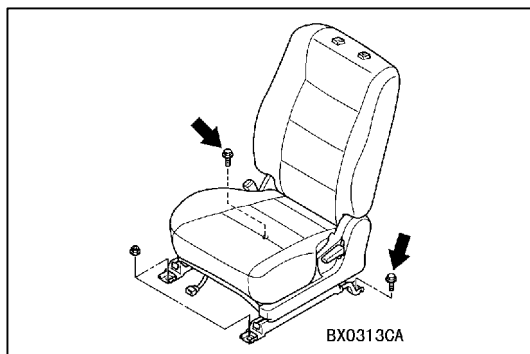
↔ marks show claw positions.

1. Heated seat switch
2. Headrest



## Front seat assembly removal steps

3. Front seat anchor cover
4. Harness connector
5. Front seat assembly



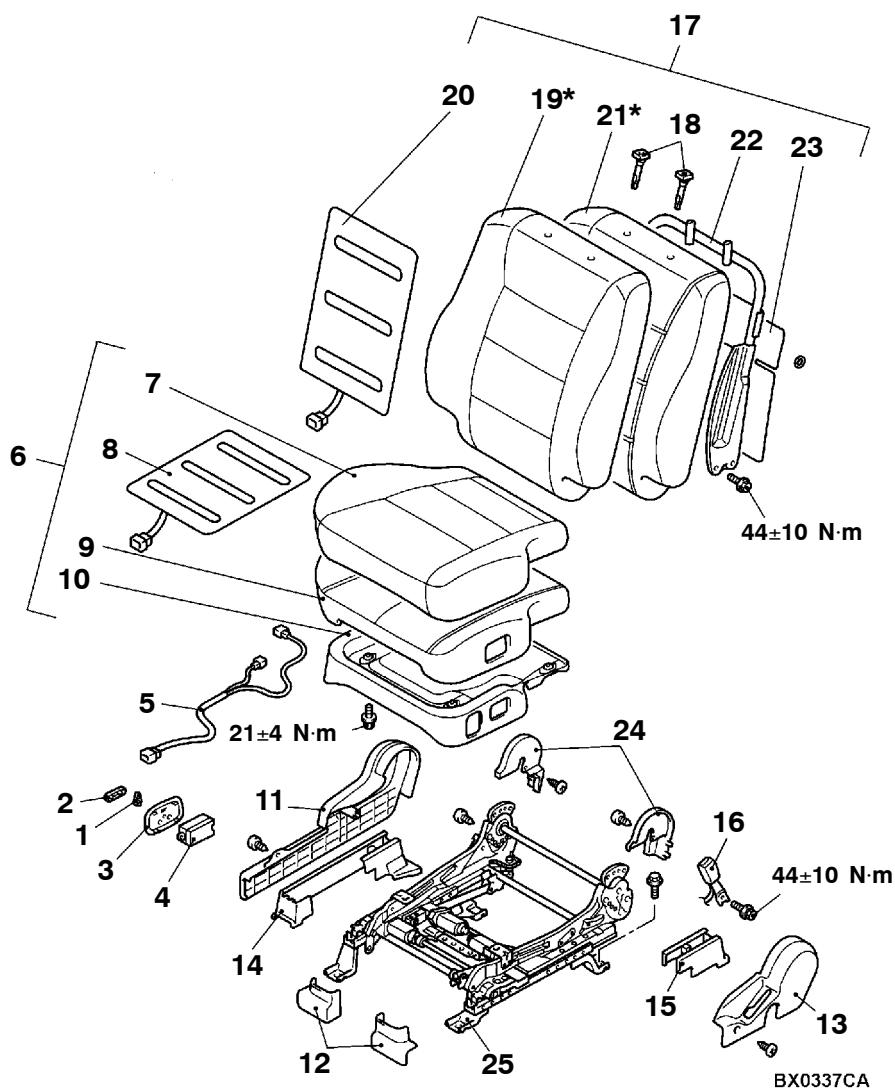
## INSTALLATION SERVICE POINT

## ▶◀ FRONT SEAT ASSEMBLY INSTALLATION

First install all of the front seat assembly mounting nuts and bolts, and then tighten them to the specified torque. The shown bolts should be tightened with no load applied to the front seat cushion.

## DISASSEMBLY AND REASSEMBLY

<Power seat>



### NOTE

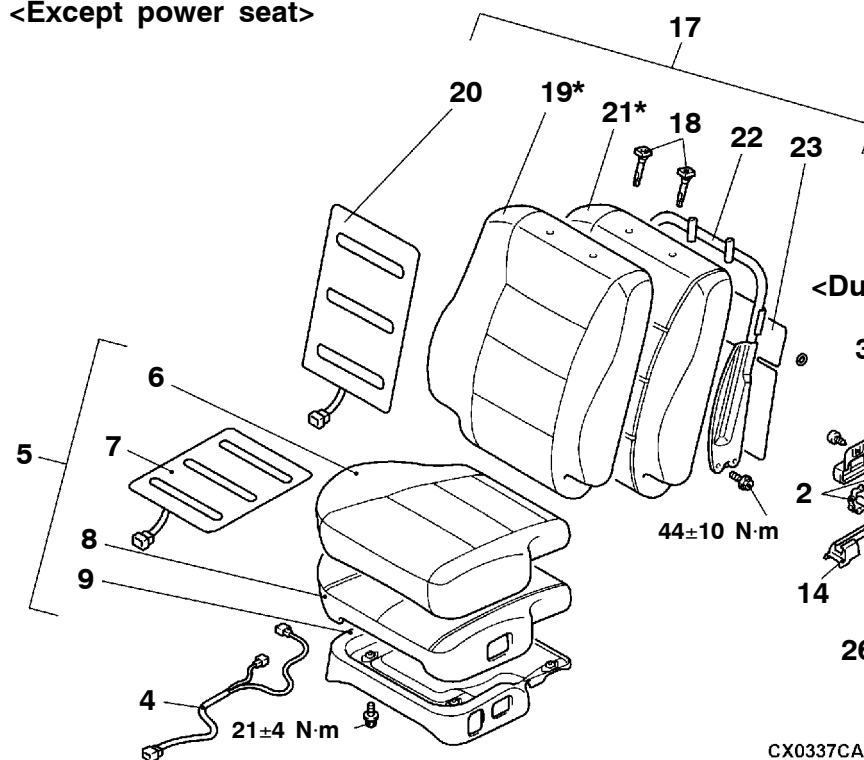
\*: For the sport seat, the seat cover and pad are non-separable.

### Disassembly steps

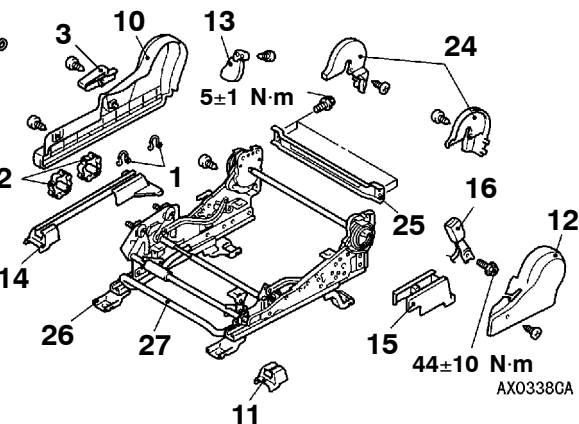
- |                                |  |
|--------------------------------|--|
| 1. Reclining adjuster knob     | 14. Seat slide adjuster side cover       |
| 2. Slide adjuster knob         | 15. Seat slide adjuster inner side cover |
| 3. Power seat switch garnish   | 16. Inner seat belt                      |
| 4. Power seat switch           | 17. Front seat back assembly             |
| 5. Harness clamp               | 18. Headrest guide                       |
| 6. Front seat cushion assembly | 19. Front seatback cover                 |
| 7. Front seat cushion cover    | 20. Front seatback heater                |
| 8. Front seat cushion heater   | 21. Front seatback pad                   |
| 9. Front seat cushion pad      | 22. Front seatback frame                 |
| 10. Front seat cushion frame   | <Vehicles without side air bag>          |
| 11. Side shield cover          | 23. Front seatback board                 |
| 12. Front rail cover           | 24. Reclining adjuster lower cover       |
| 13. Hinge cover                | 25. Seat slide adjuster                  |

◀A▶

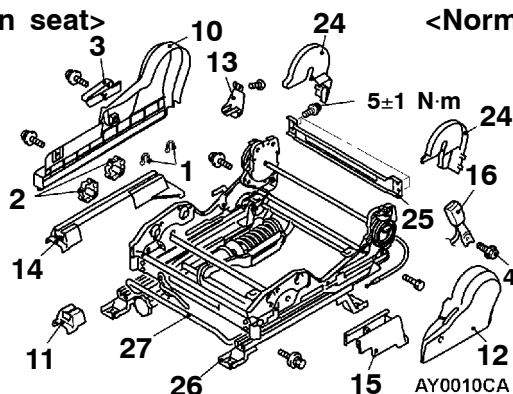
&lt;Except power seat&gt;



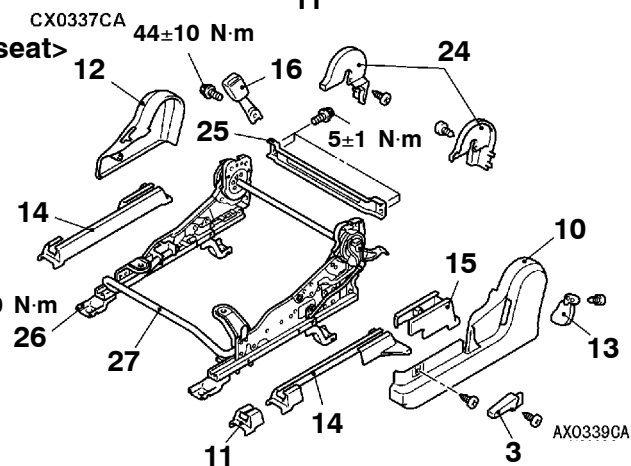
&lt;Dual height adjuster seat&gt;



&lt;Suspension seat&gt;



&lt;Normal seat&gt;



## NOTE

\*: For the sport seat, the seat cover and pad are non-separable.

## Disassembly steps

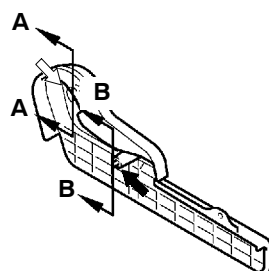
1. Clip<Vehicles with Suspension seat and dual height adjuster seat>
2. Height adjuster knob<Vehicles with Suspension seat and dual height adjuster seat>
3. Reclining adjuster lever
4. Harness clamp
5. Front seat cushion assembly
6. Front seat cushion cover
7. Front seat cushion heater
8. Front seat cushion pad
9. Front seat cushion frame
10. Side shield cover
11. Front rail cover
12. Hinge cover
13. Rear rail cover



14. Seat slide adjuster side cover
15. Seat slide adjuster inner side cover
16. Inner seat belt
17. Front seat back assembly
18. Headrest guide
19. Front seatback cover
20. Front seatback heater
21. Front seatback pad
22. Front seatback frame
- <Vehicles without side air bag>
23. Front seat back board
24. Reclining adjuster lower cover
25. Front seat frame
26. Seat slide adjuster
27. Seat slide adjuster lever

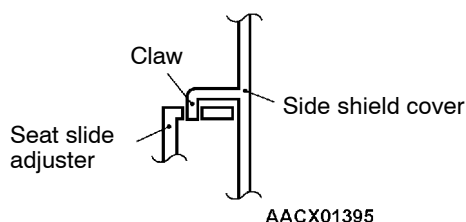
## CLIP AND CLAW POSITION

### <Side shield cover>

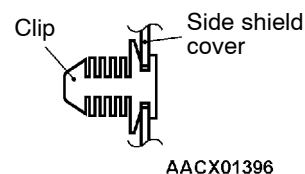


ACX01394

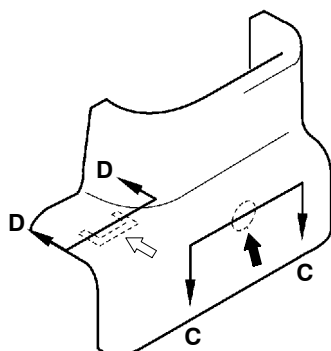
#### Section A - A



#### Section B - B

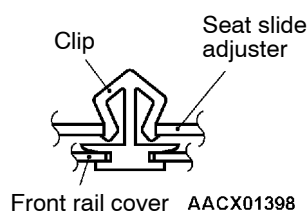


### <Front rail cover>

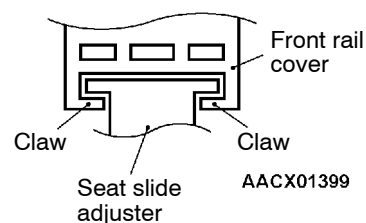


ACX01397

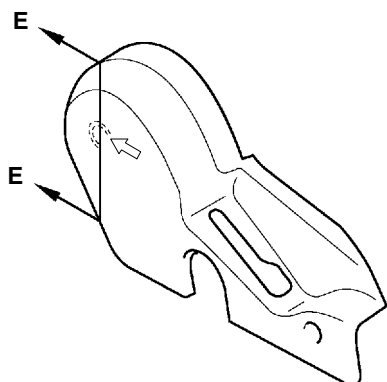
#### Section C - C



#### Section D - D

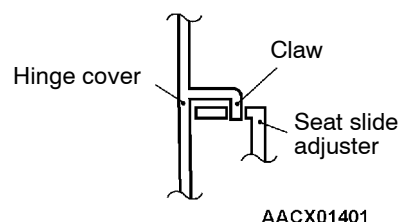


### <Hinge cover>

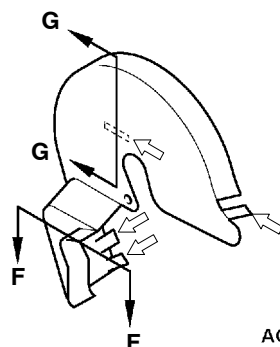


ACX01400

#### Section E - E

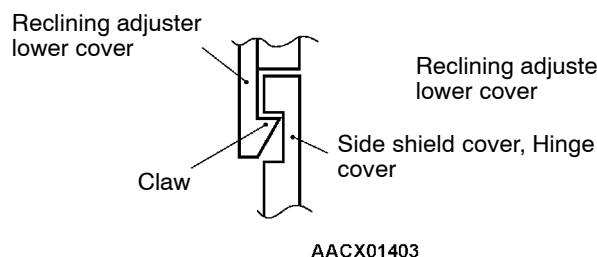


### <Reclining adjuster lower cover>

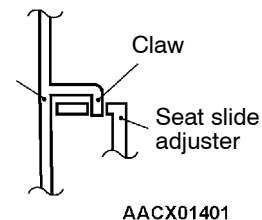


ACX01402

#### Section F - F

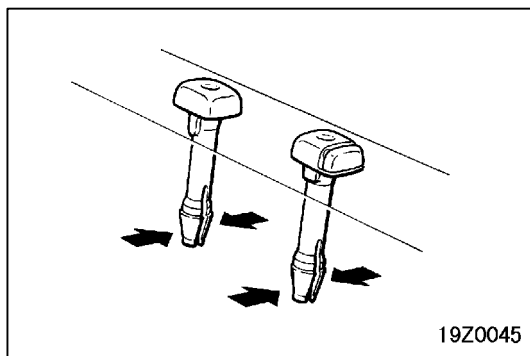
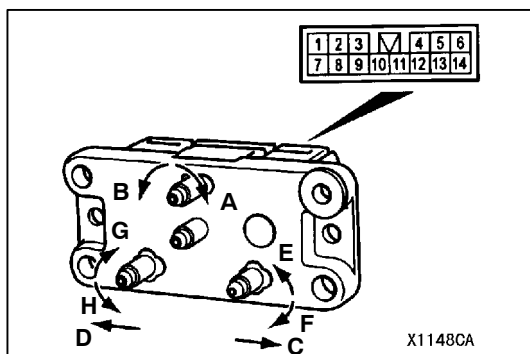


#### Section G - G

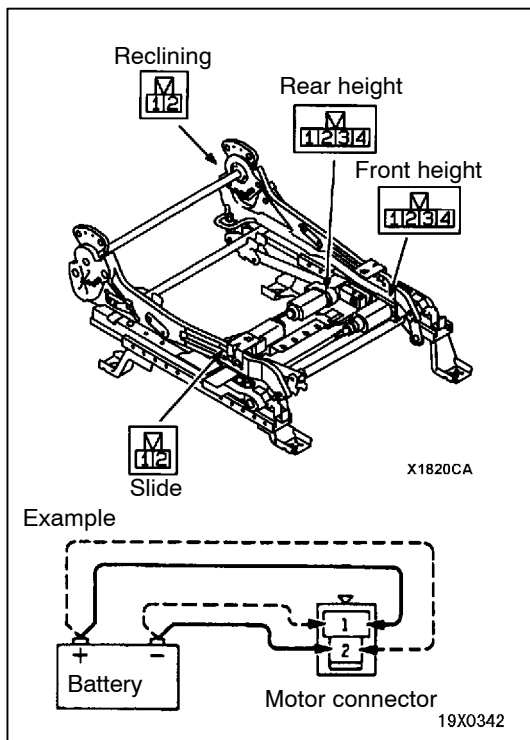


#### NOTE

- ➡ : Clip position
- ⇐ : Claw position

**REMOVAL SERVICE POINT****◀A▶ HEADRESTRAINT GUIDE REMOVAL****INSPECTION****POWER SEAT MANUAL SWITCH CONTINUITY CHECK**

Switch position			Terminal No.									
			1	2	3	4	5	6	7	8	13	14
Reclining switch	Front	A			○	○					○	○
	Rear	B			○	○					○	○
Slide switch	Front	C							○	○	○	○
	Rear	D							○	○	○	○
Front height switch	Up	E	○	○							○	○
	Down	F	○	○							○	○
Rear height switch	Up	G					○	○			○	○
	Down	H					○	○			○	○



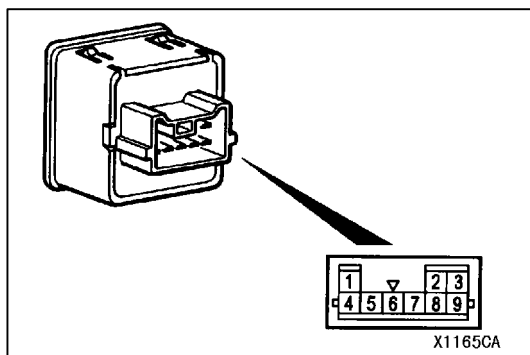
### POWER SEAT SWITCH FUNCTION CHECK

1. Disconnect the motor connectors.
2. When the battery voltage is applied to the motor terminals, each motor should run smoothly and the seat adjusting mechanism should meet the table below.

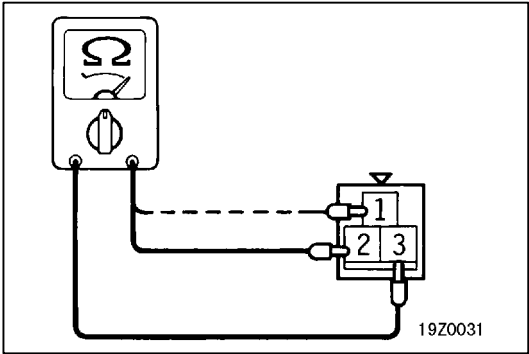
Motor name	Function direction	Terminal No.				Stop position
		1	2	3	4	
Front height	Down	⊕	⊖	-	-	Should stop at pre-determined limit position.
	Up	⊖	⊕	-	-	
Rear height	Down	-	-	⊕	⊖	
	Up	-	-	⊖	⊕	
Slide	Rear	⊕	⊖	-	-	
	Front	⊖	⊕	-	-	
Reclining	Rear	⊖	⊕	-	-	
	Front	⊕	⊖	-	-	

3. If defective, check the power seat adjuster assembly.

### HEATED SEAT SWITCH CONTINUITY CHECK



	Switch position	1	3	4	5	IND	8	9	2	6
Driver's side	HI			○	⊕	→	⊖	○	ILL	
	OFF									
	LO				⊕	→	⊖	○		
Passenger's side	HI	○	○		⊕	→	⊖			
	OFF									
	LO		○		⊕	→	⊖			

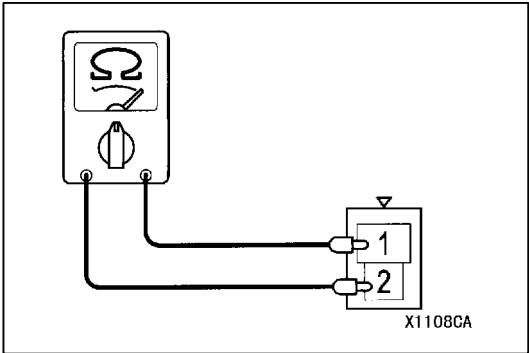


**SEAT CUSHION HEATER CHECK**

Measure the resistance between terminals.

**Standard value (at cabin temperature of 20°C):**

Terminal No.	Sport seat	Except sport seat
Between terminals 1-3	6.0Ω±10%	5.0Ω±10%
Between terminals 2-3	6.4Ω±10%	5.4Ω±10%



**SEATBACK HEATER CHECK**

Measure the resistance between terminals.

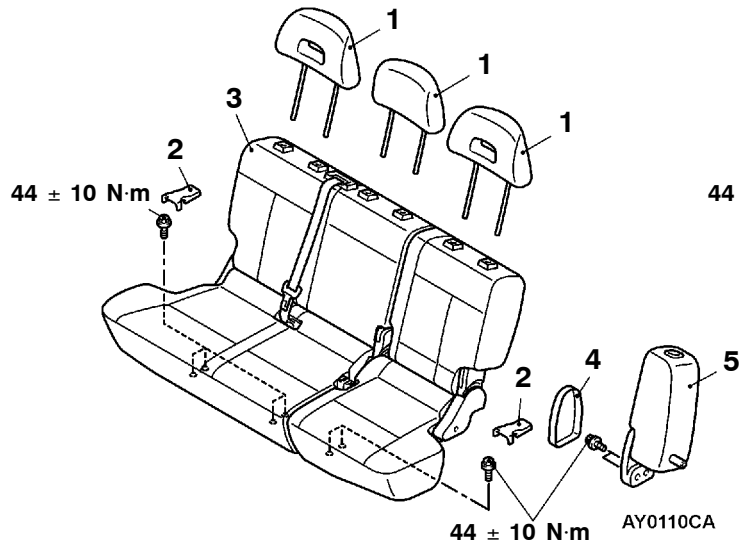
**Standard value (at cabin temperature of 20°C):**

Terminal No.	Sport seat	Except sport seat
Between terminals 1-2	6.0Ω±10%	6.0Ω±10%



## REAR/SECOND SEAT REMOVAL AND INSTALLATION

### <Short wheelbase>

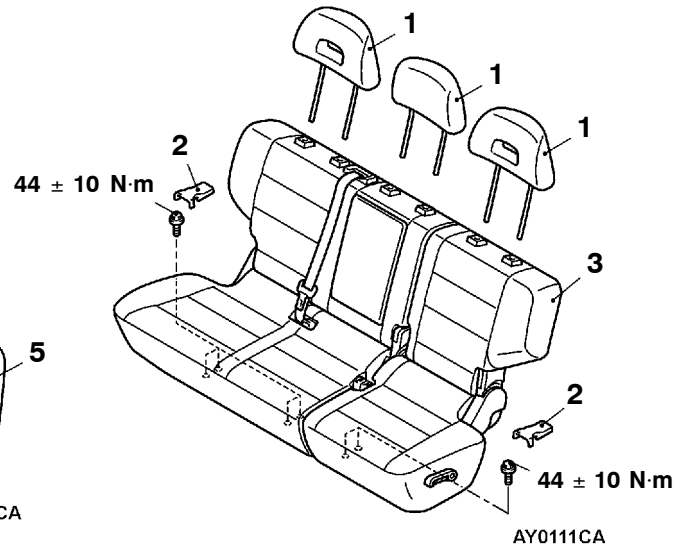


1. Headrest

#### Rear/second seat assembly removal steps

2. Seat anchor cover
3. Rear/second seat assembly

### <Long wheelbase>

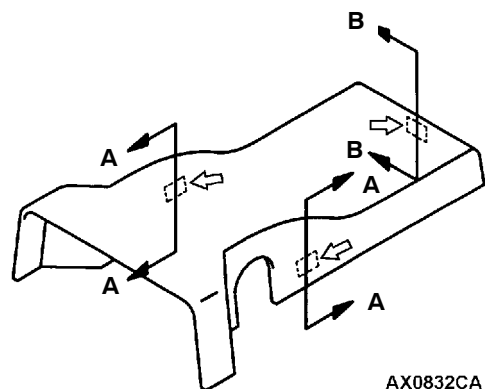


#### Seat side back assembly removal steps

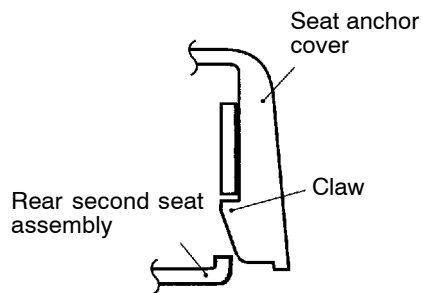
4. Seat hinge cover
5. Seat side back assembly

## CLAW POSITION

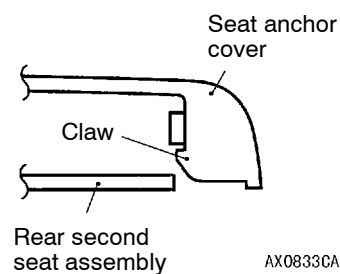
## &lt;Seat anchor cover&gt;



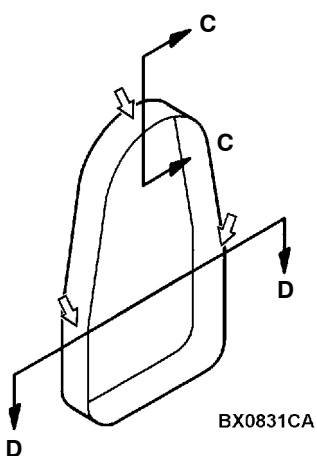
## Section A - A



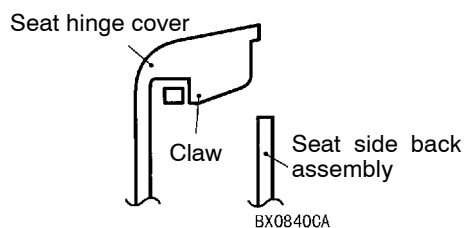
## Section B - B



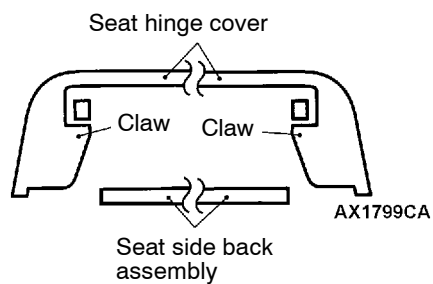
## &lt;Front rail cover&gt;



## Section C - C



## Section D - D

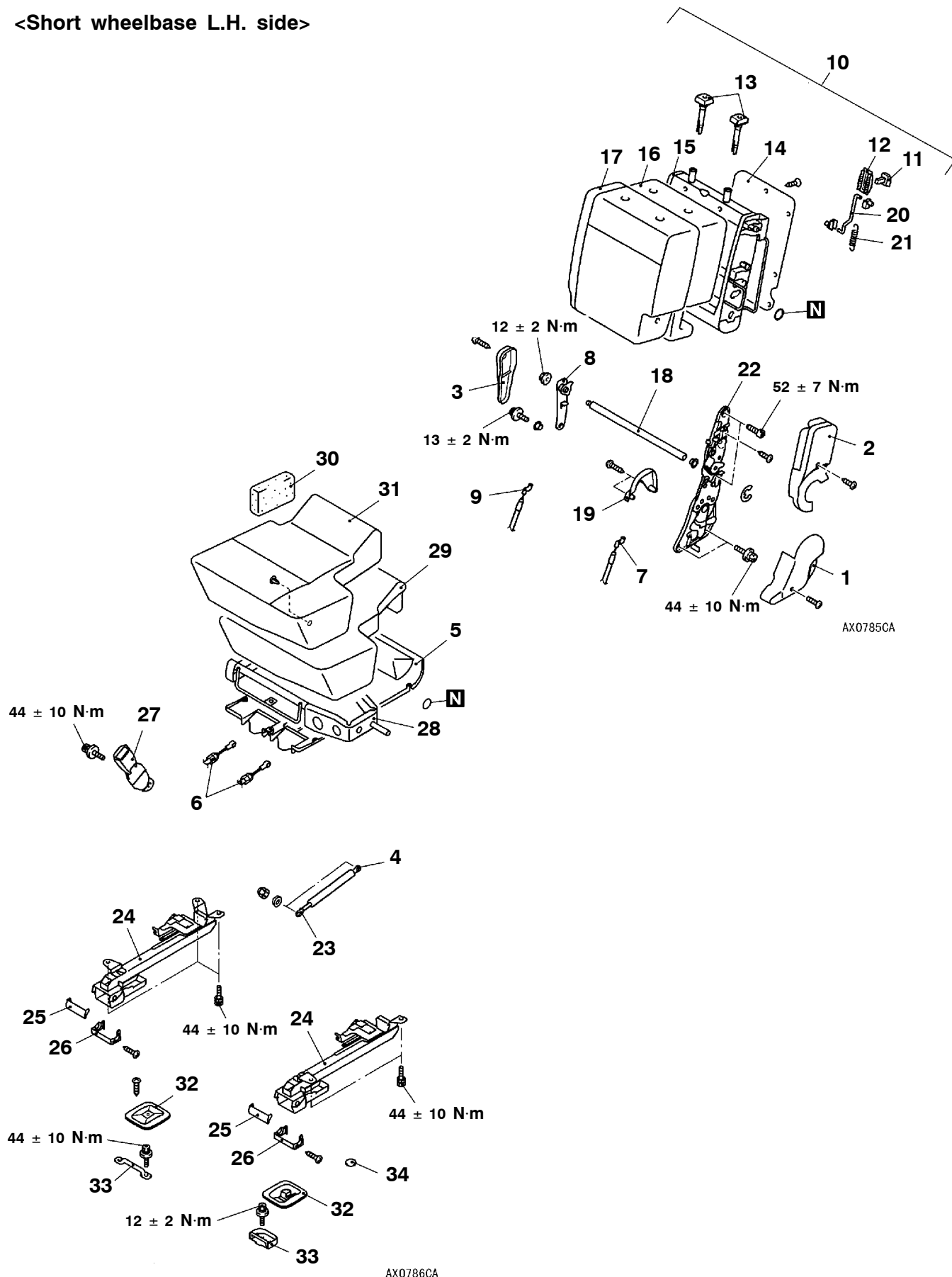


## NOTE


⇐ : Claw position

## DISASSEMBLY AND REASSEMBLY

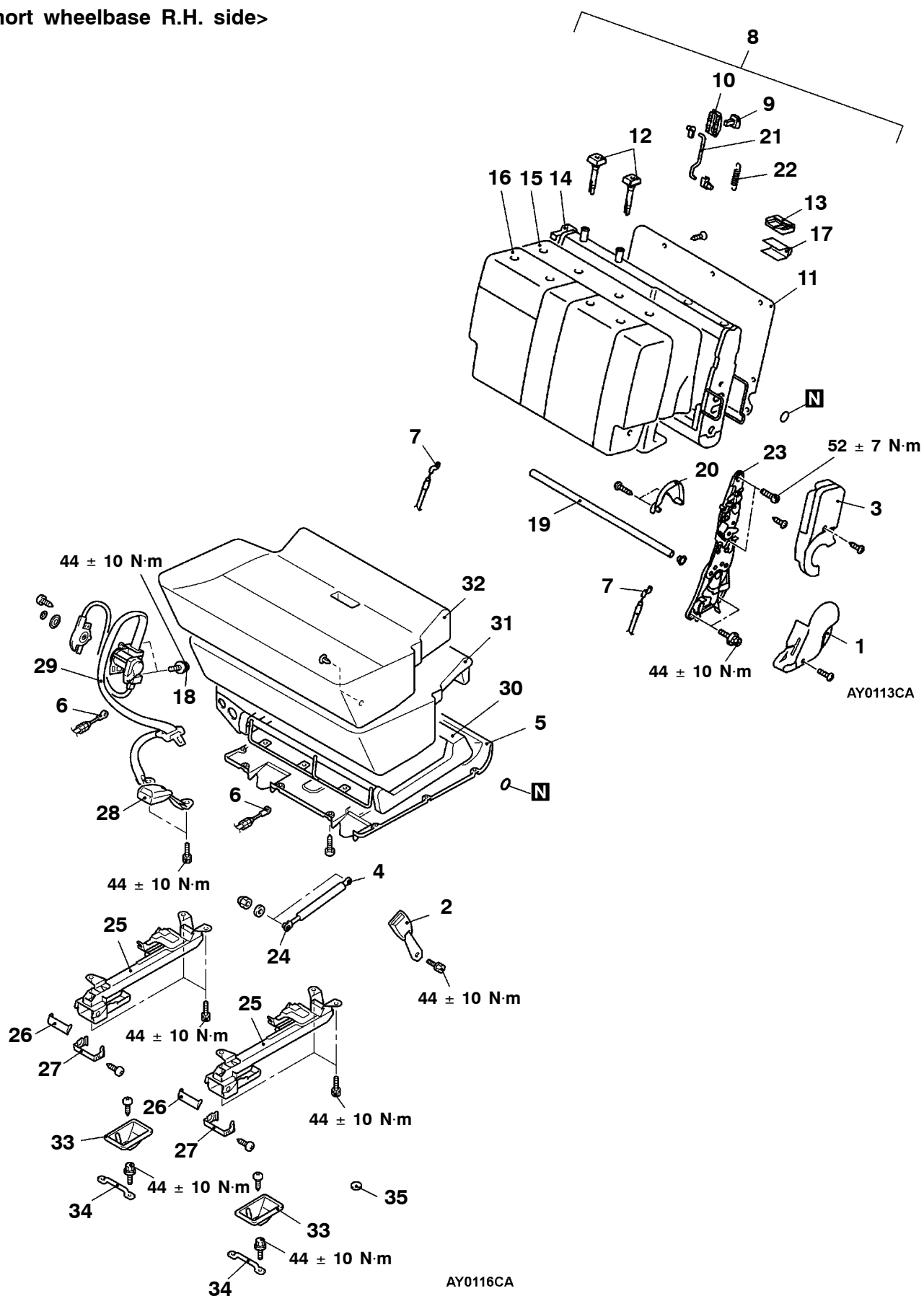
<Short wheelbase L.H. side>



**Disassembly steps**

- 
- A small diagram labeled 'A' with arrows pointing left and right, indicating a side view of the seat assembly.
1. Lower reclining adjuster cover
  2. Center reclining adjuster cover
  3. Free hinge cover
  4. Gas damper connection
  5. Rear seat cushion under cover
  6. Catch cable A, B connection
  7. Catch cable A
  8. Hinge bracket
  9. Catch cable B
  10. Rear seat back assembly
  11. Folding lever knob
  12. Folding knob garnish
  13. Headrest restraint guide
  14. Rear seat back board
  15. Rear seat back frame
  16. Rear seat back pad
  17. Rear seat back cover
  18. Shaft
  19. Reclining adjuster back cover
  20. Rod
  21. Spring
  22. Reclining adjuster
  23. Gas damper
  24. Rear seat catch assembly
  25. Upper foot cover
  26. Lower foot cover
  27. Inner seat belt
  28. Rear seat cushion frame
  29. Rear seat cushion pad
  30. Support pad
  31. Rear seat cushion cover
  32. Striker cover
  33. Striker
  34. Plug

<Short wheelbase R.H. side>

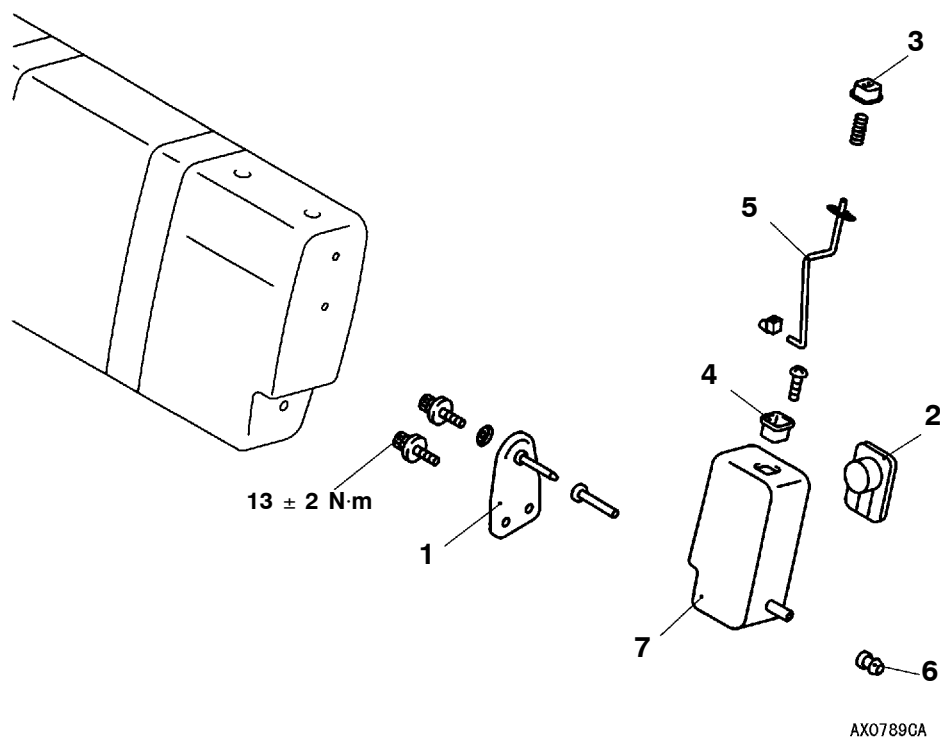


**Disassembly steps**

1. Lower reclining adjuster cover
2. Inner seat belt
3. Center reclining adjuster cover
4. Gas damper connection
5. Rear seat cushion under cover
6. Catch cable A connection
7. Catch cable A
8. Rear seat back assembly
9. Folding lever knob
10. Folding knob garnish
11. Rear seat back board
12. Headrest restraint guide
13. Sash anchor garnish
14. Rear seat back frame
15. Rear seat back pad
16. Rear seat back cover
17. Seat belt protector
18. Center seat belt connection

19. Shaft
20. Reclining adjuster back cover
21. Rod
22. Spring
23. Reclining adjuster
24. Gas damper
25. Rear seat catch assembly
26. Upper foot cover
27. Lower foot cover
28. Inner seat belt
29. Center seat belt
30. Rear seat cushion frame
31. Rear seat cushion pad
32. Rear seat cushion cover
33. Striker cover
34. Striker
35. Plug

◀A▶

**<Short wheelbase-Rear seat side back assembly>****Disassembly steps**

1. Hinge bracket
2. Cup holder
3. Knob
4. Knob guide

5. Rod
6. Bushing
7. Rear seat side back

**<Long wheelbase L.H. side>**



AX0793CA

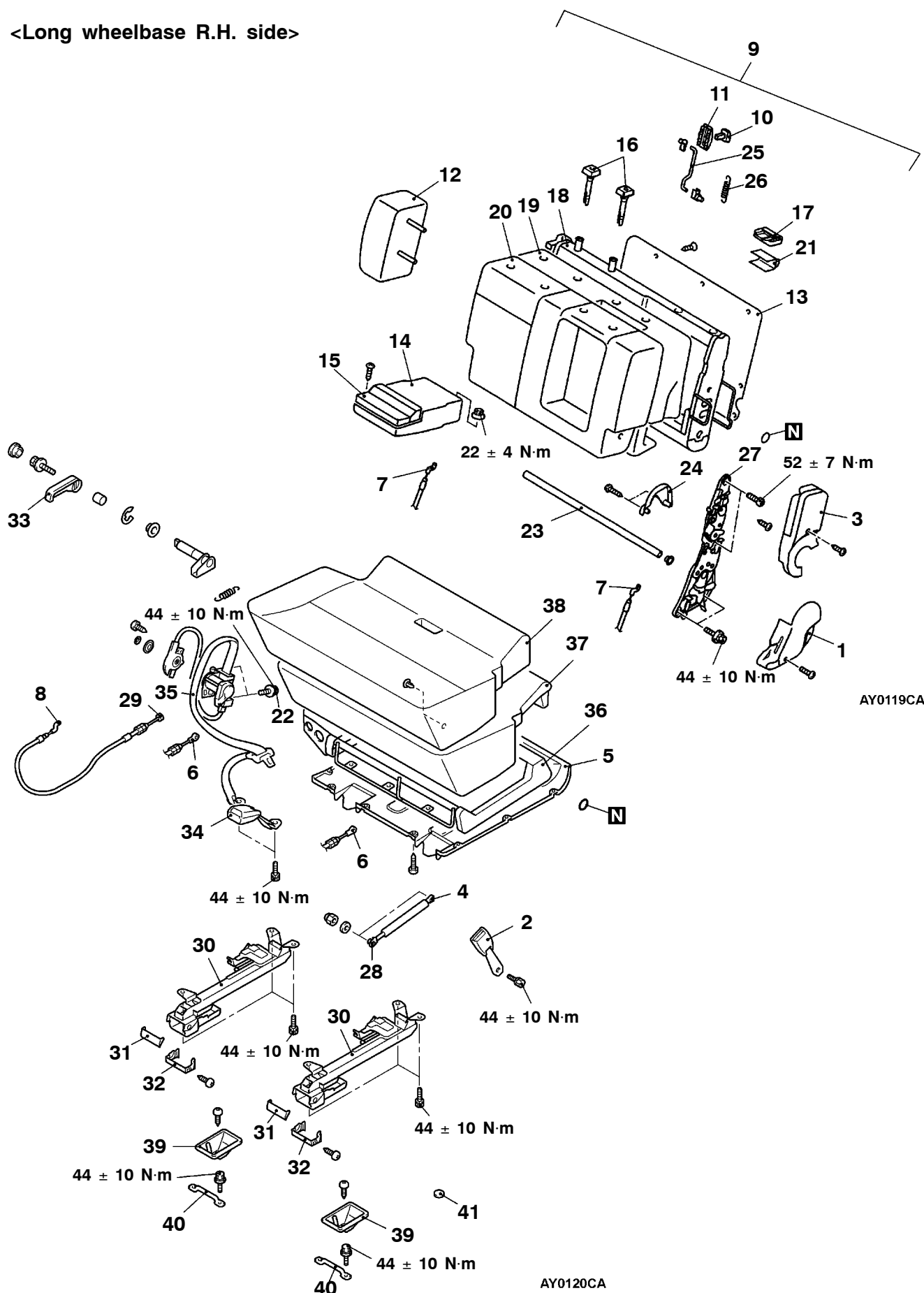
**Disassembly steps**

1. Lower reclining adjuster cover
2. Center reclining adjuster cover
3. Free hinge cover
4. Gas damper connection
5. Rear seat cushion under cover
6. Reclining cable connection
7. Catch cable A, B connection
8. Catch cable A
9. Hinge bracket
10. Catch cable B
11. Second seat back assembly
12. Folding lever knob
13. Folding knob garnish
14. Second seat side back assembly
15. Headrest restraint guide
16. Second seat back board
17. Second seat back frame
18. Second seat back pad
19. Second seat back cover
20. Shaft
21. Reclining adjuster back cover
22. Rod
23. Spring
24. Reclining adjuster
25. Gas damper
26. Reclining cable
27. Second seat catch assembly
28. Upper foot cover
29. Lower foot cover
30. Reclining knob
31. Inner seat belt
32. Second seat cushion frame
33. Second seat cushion pad
34. Support pad
35. Second seat cushion cover
36. Striker cover
37. Striker
38. Plug

◀A▶



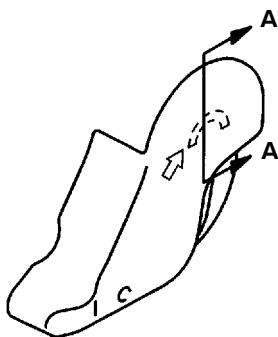
<Long wheelbase R.H. side>



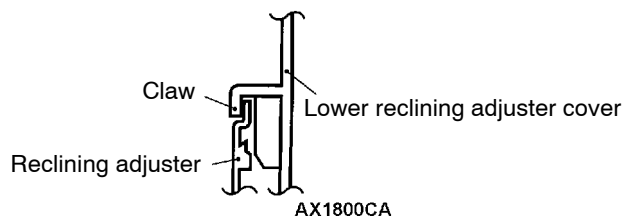
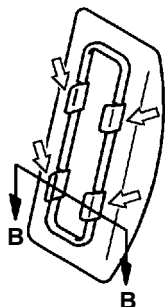
**Disassembly steps**

1. Lower reclining adjuster cover
2. Inner seat belt
3. Center reclining adjuster cover
4. Gas damper connection
5. Rear seat cushion under cover
6. Catch cable A connection
7. Catch cable A
8. Reclining cable connection
9. Second seat back assembly
10. Folding lever knob
11. Folding knob garnish
12. Second seat side back assembly
13. Second seat back board
14. Armrest
15. Cup holder
16. Headrest guide
17. Sash anchor garnish
18. Second seat back frame
19. Second seat back pad
20. Second seat back cover
21. Seat belt protector
22. Center seat belt connection
23. Shaft
24. Reclining adjuster back cover
25. Rod
26. Spring
27. Reclining adjuster
28. Gas damper
29. Reclining cable
30. Second seat catch assembly
31. Upper foot cover
32. Lower foot cover
33. Reclining knob
34. Inner seat belt
35. Center seat belt
36. Second seat cushion frame
37. Second seat cushion pad
38. Second seat cushion cover
39. Striker cover
40. Striker
41. Plug

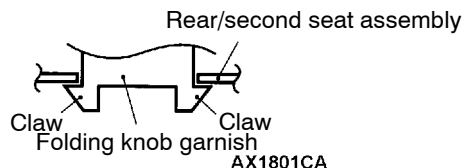
◀A▶

**CLAW POSITION****<Lower reclining adjuster cover>**

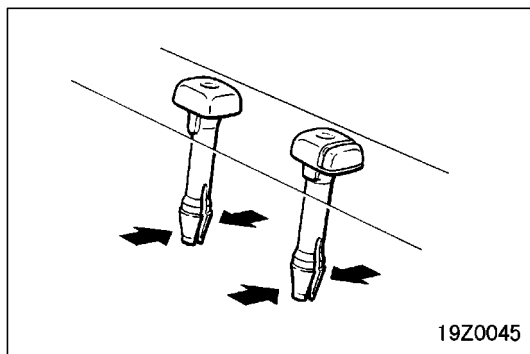
AX0800CA

**Section A - A****<Folding knob garnish>**

AX0830CA

**Section B - B****NOTE**

◀▶ : Claw position

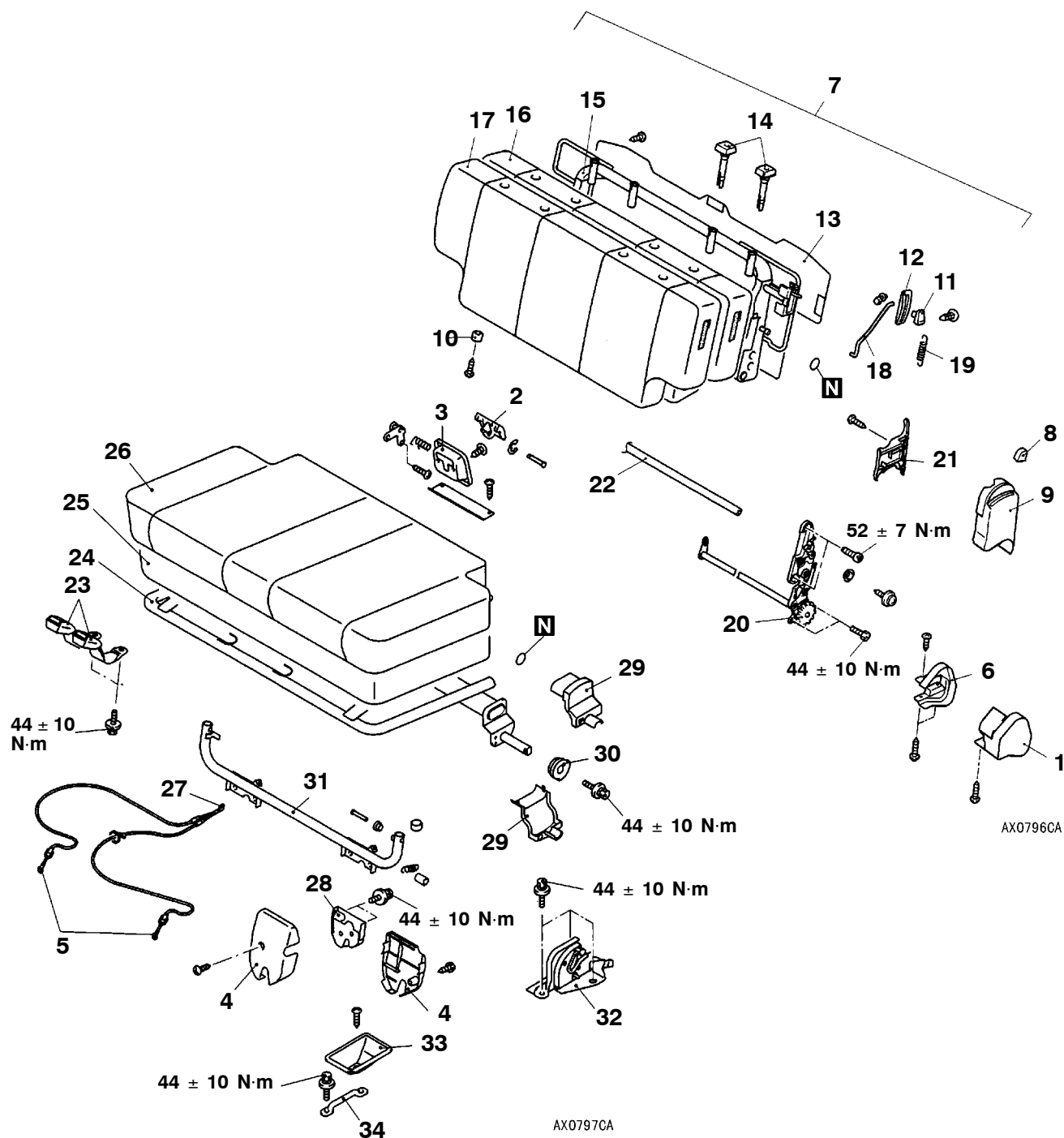


## REMOVAL SERVICE POINT

### ◀A▶ HEADRESTRAINT GUIDE REMOVAL

## THIRD SEAT

### DISASSEMBLY AND REASSEMBLY



AX0797CA

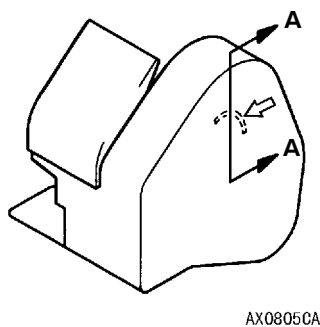
**Disassembly steps**

1. Outer reclining adjuster cover
2. Catch release knob
3. Catch release knob garnish
4. Latch cover
5. Catch cable connection
6. Inner reclining adjuster cover
7. Third seat back assembly
8. Reclining knob
9. Reclining adjuster cover
10. Damper
11. Folding lever knob
12. Folding knob garnish
13. Third seat back board
14. Headrest guide
15. Third seat back frame
16. Third seat back pad
17. Third seat back cover
18. Rod
19. Spring
20. Reclining adjuster
21. Inner reclining adjuster cover
22. Shaft
23. Inner seat belt
24. Third seat cushion frame
25. Third seat cushion pad
26. Third seat cushion cover
27. Catch cable
28. Third seat latch
29. Arm cover
30. Cam
31. Third seat leg frame assembly
32. Catch assembly
33. Striker cover
34. Striker

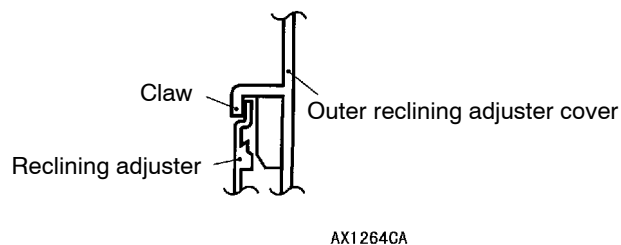


## CLAW POSITION

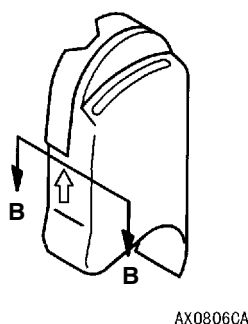
### <Outer reclining adjuster cover>



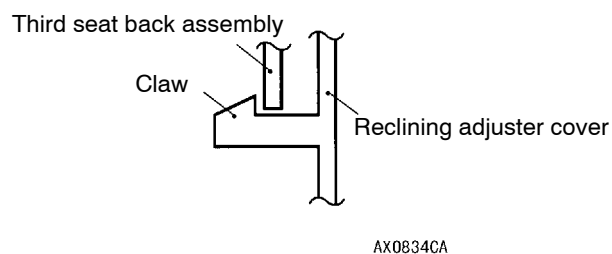
### Section A - A



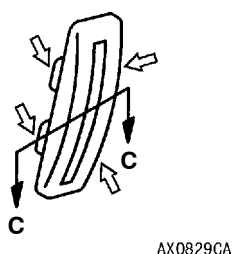
### <Reclining adjuster cover>



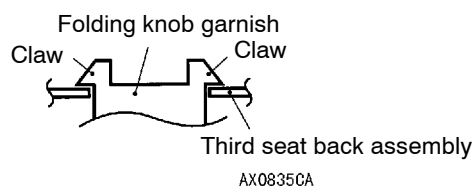
### Section B - B



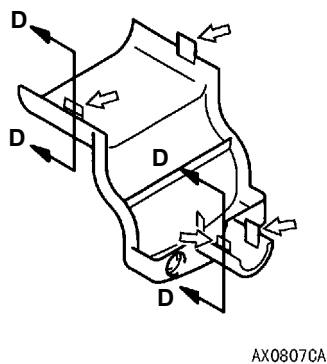
### <Folding knob garnish>



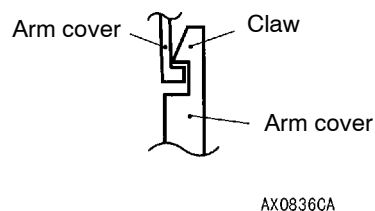
### Section C - C



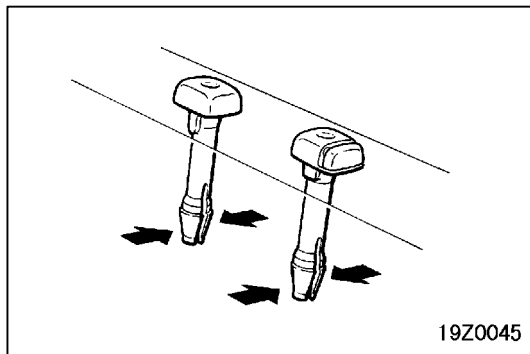
### <Arm cover>



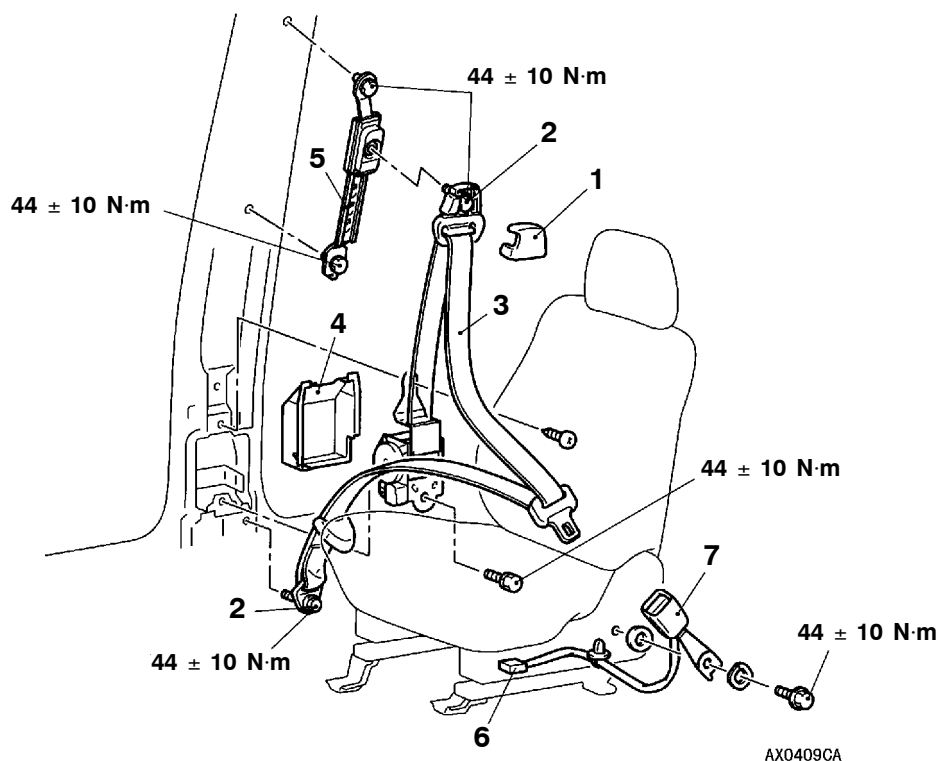
### Section D - D



NOTE  
 ⇐ : Claw position

**DISASSEMBLY SERVICE POINT****◀A▶ HEADRESTRAINT GUIDE REMOVAL**

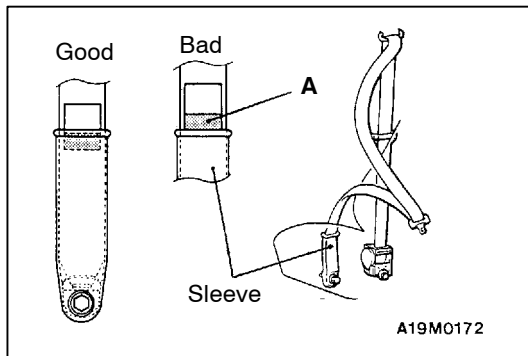
## FRONT SEAT BELT REMOVAL AND INSTALLATION

**Outer seat belt removal steps**

1. Sash guide cover
2. Outer seat belt connection
  - Lower quarter trim <Short wheelbase> (Refer to P.52A-13.)
  - Center pillar trim <Long wheelbase> (Refer to P.52A-15.)
3. Outer seat belt
4. Front noise protector
5. Shoulder anchor adjuster

**Inner seat belt removal steps**

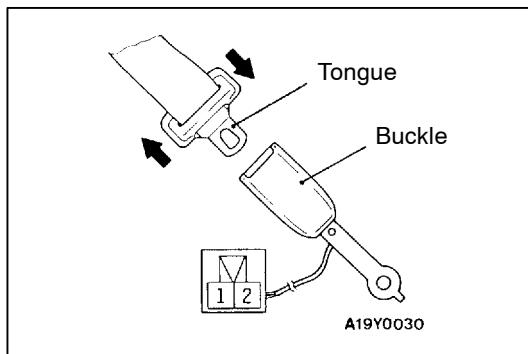
- Front seat assembly (Refer to P.52A-18.)
- 6. Seat belt switch harness connector
- 7. Inner seat belt



## INSPECTION

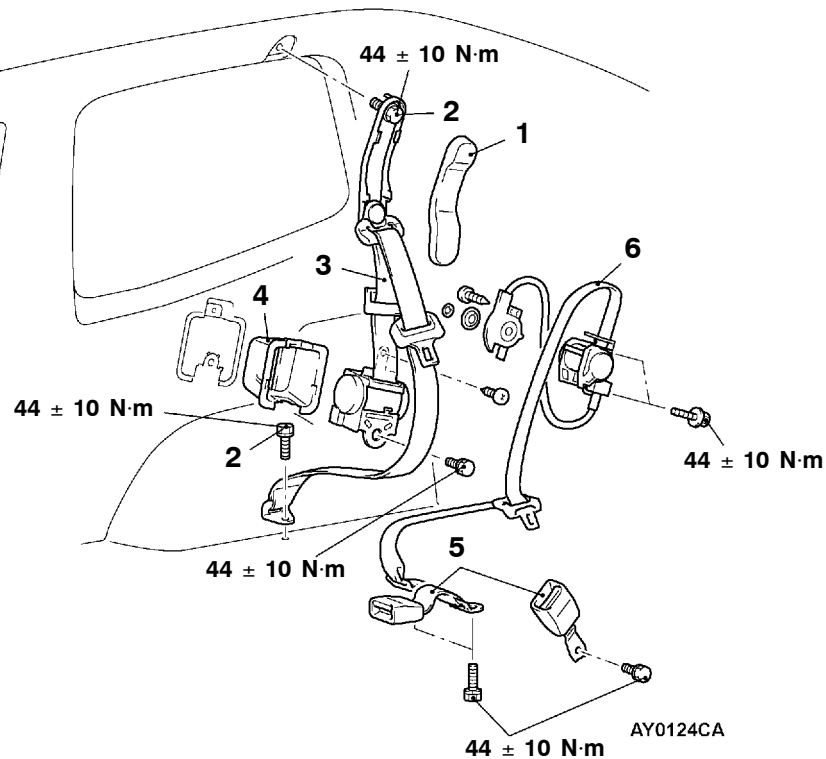
### OUTER SEAT BELT CHECK

Check that the A section (red) of the label attached to the outer seat belt is not exposed from the outer seat belt sleeve. If it is exposed, release the outer seat belt.



### SEAT BELT BUCKLE CONTINUITY CHECK

Items	Terminal No.	
	1	2
Fastened seat belt		
Unfastened seat belt	○	○

**REAR SEAT BELT<SHORT WHEELBASE>****REMOVAL AND INSTALLATION****Outer seat belt removal steps**

- Rear seat assembly (Refer to P.52A-25.)
- Upper quarter trim (Refer to P.52A-13.)
- 1. Sash guide cover
- 2. Outer seat belt connection
- 3. Outer seat belt
- 4. ELR cover

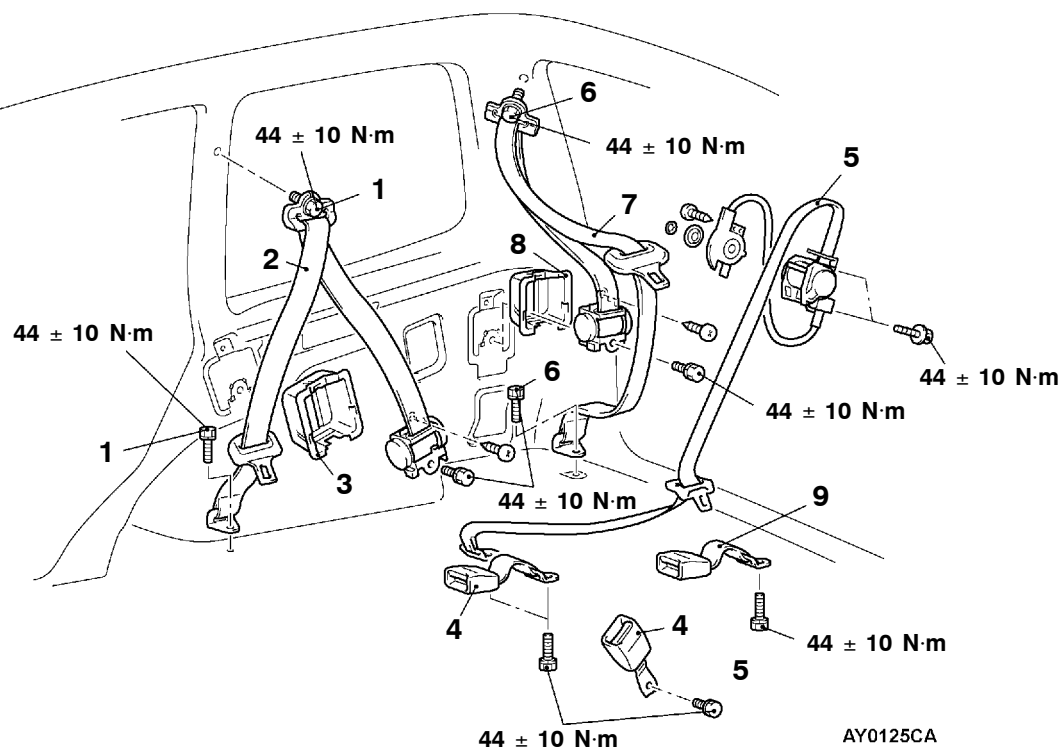
**Inner seat belt and center seat belt removal steps**

- Rear seat assembly (Refer to P.52A-25.)
- 5. Inner seat belt (Refer to P.52A-27,29.)
- 6. Center seat belt (Refer to P.52A-29.)



## SECOND/THIRD SEAT BELT<LONG WHEELBASE>

### REMOVAL AND INSTALLATION



#### Second seat belt removal steps

- Lower quarter trim  
(Refer to P.52A-15.)
- 1. Outer seat belt connection
- 2. Outer seat belt
- 3. ELR cover
- 4. Inner seat belt  
(Refer to P.52A-31,33.)
- 5. Center seat belt  
(Refer to P.52A-33.)

#### Inner seat belt removal steps

- Lower quarter trim  
(Refer to P.52A-15.)
- Pillar duct (R.H.)  
(Refer to GROUP 55A)
- Rear blower assembly (R.H.)  
(Refer to GROUP 55A)
- TV tuner (L.H.) (Refer to GROUP 54)
- 6. Outer seat belt connection
- 7. Outer seat belt
- 8. ELR cover
- 9. Inner seat belt  
(Refer to P.52A-35.)

**NOTES**

## GROUP 52A INTERIOR

### GENERAL

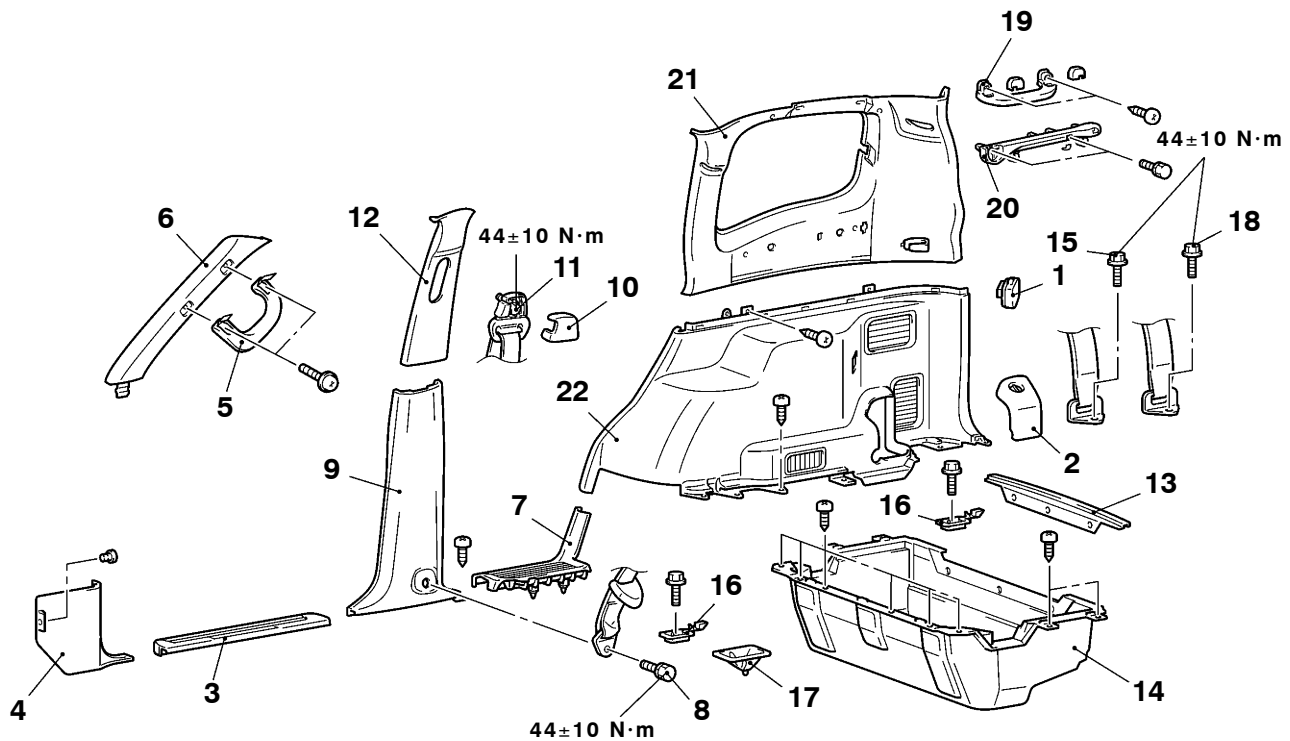
#### OUTLINE OF CHANGE

- Some models are equipped with a shelf holder assembly. Its service procedure is as follows:

### TRIMS

#### REMOVAL AND INSTALLATION

<Long Wheelbase>



AAC006066

#### NOTE

For door trims, refer to GROUP 42.

- |                                |                                 |
|--------------------------------|---------------------------------|
| 1. AC socket                   | 12. Center pillar trim, upper   |
| 2. Quarter trim cover          | 13. Back door scuff plate       |
| • Third seat assembly          | 14. Luggage floor box           |
| 3. Front scuff plate           | 15. Second seat belt connection |
| 4. Cowl side trim              | 16. Luggage hook                |
| 5. Assist grip                 | 17. Striker cover               |
| 6. Front pillar trim           | 18. Third seat belt connection  |
| 7. Rear scuff plate            | 19. Assist grip                 |
| 8. Front seat belt connection  | 20. Shelf holder assembly       |
| 9. Center pillar trim, lower   | 21. Quarter trim, upper         |
| 10. Sash guide cover           | 22. Quarter trim, lower         |
| 11. Front seat belt connection |                                 |

**NOTES**